



# ***Newcrest's Blue Skies... Any Clouds to Report?***

Tony Palmer  
Managing Director and CEO – Newcrest Mining Limited

Sydney Mining Club  
6 October 2005

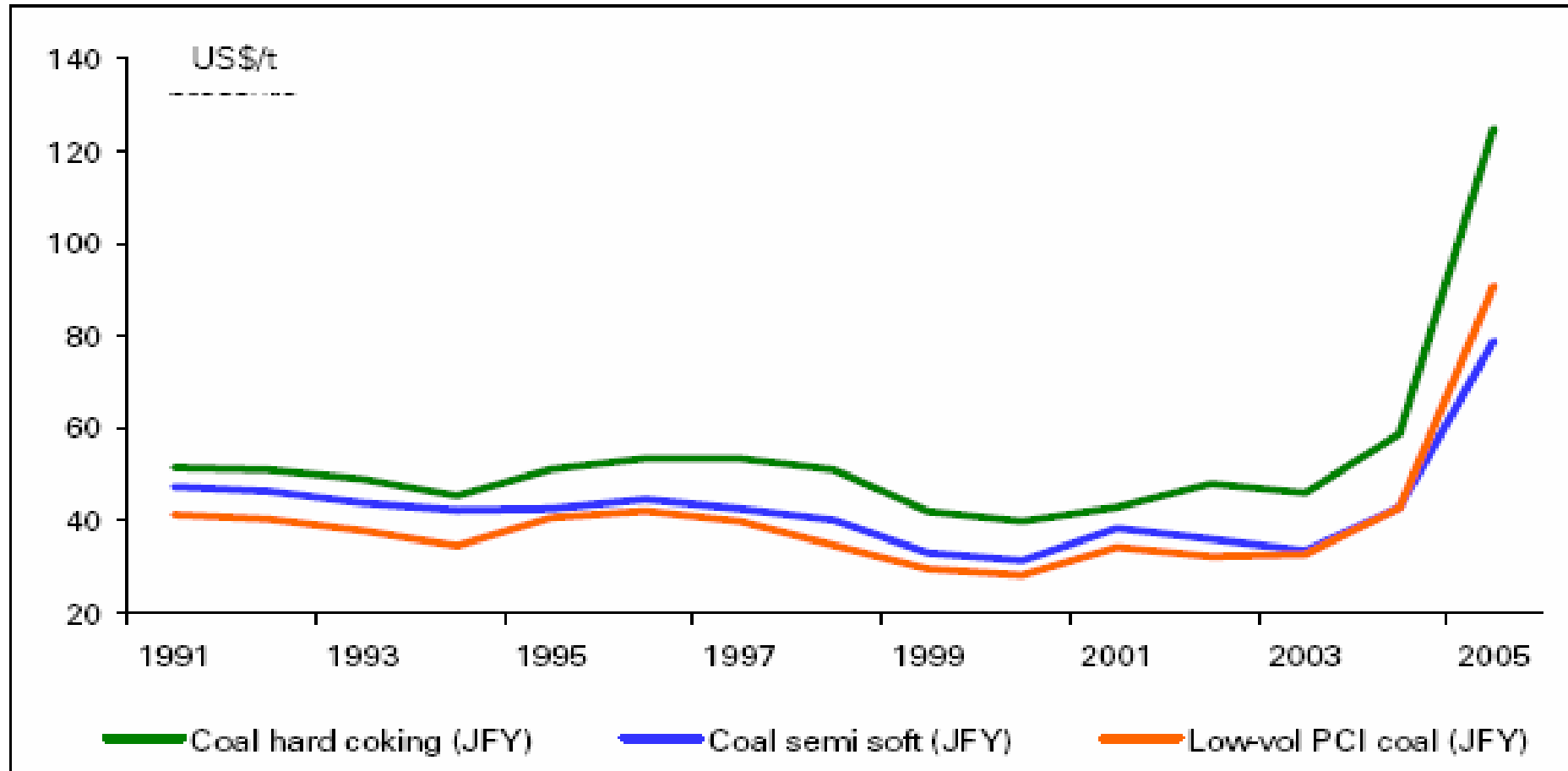


## Copper Price US\$/lb





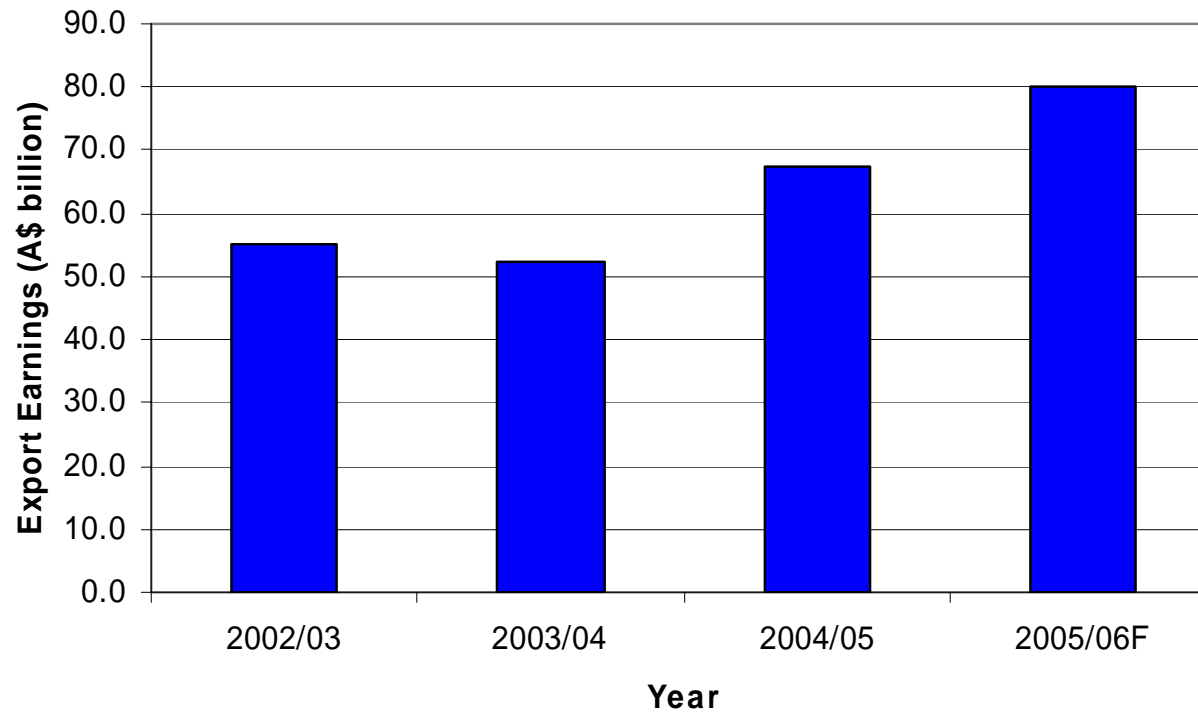
## Metallurgical Coal Settlement Prices



Source: Tex Report, DB Research



### Minerals Industry Export Earnings





## Major Australian commodity exports



abare



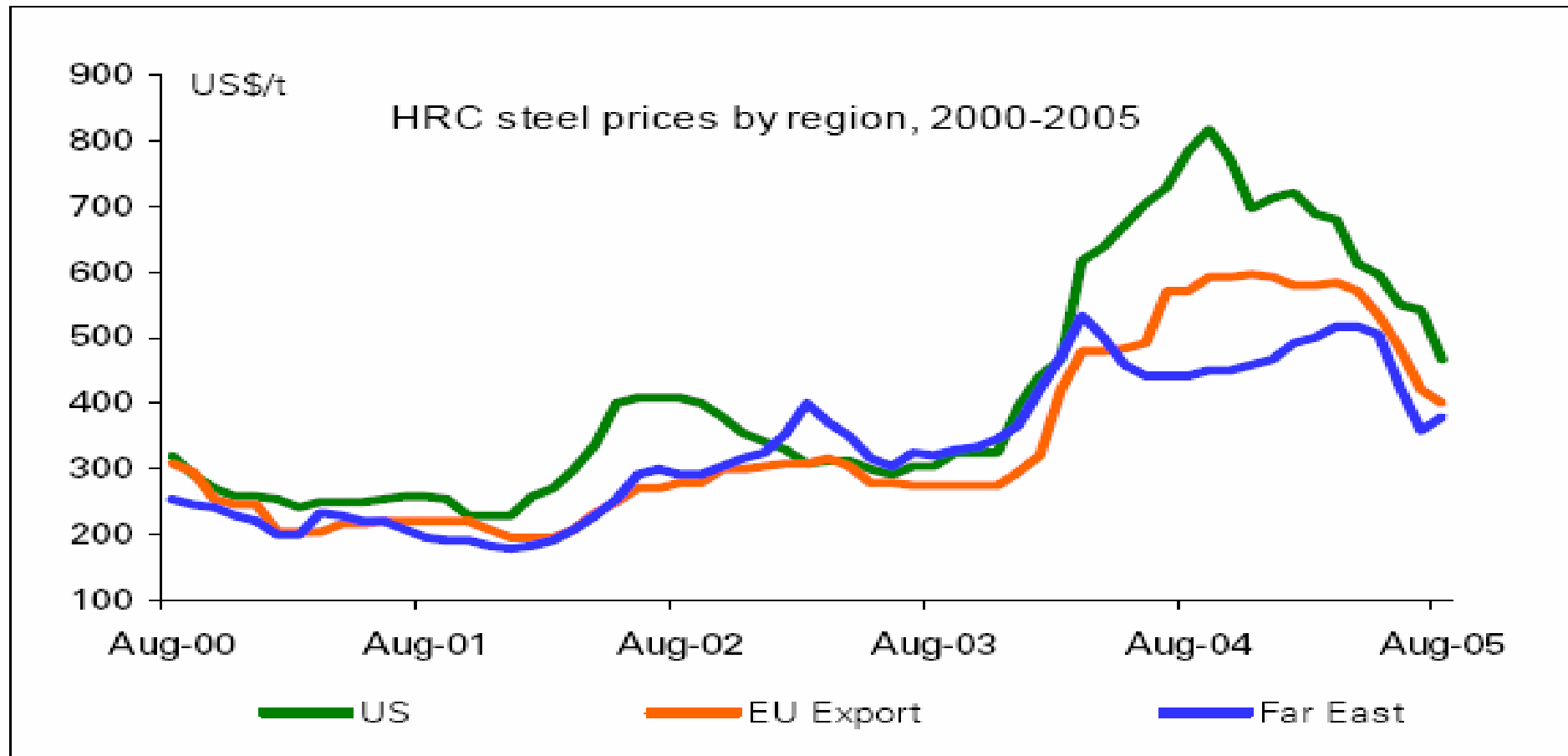


## West Texas Intermediate Crude Oil Price





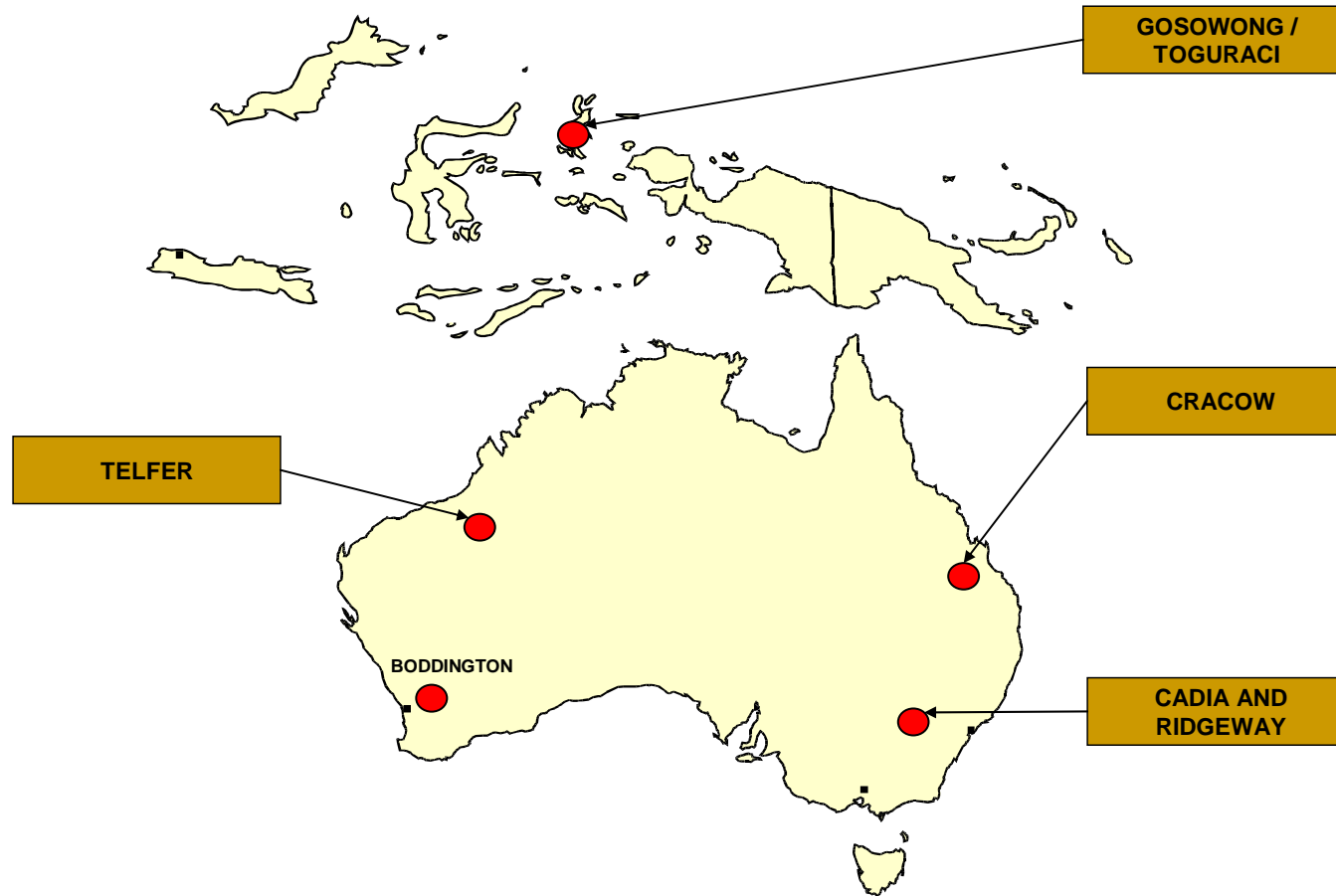
## Steel Prices by Region



Source: CRU, DB Research



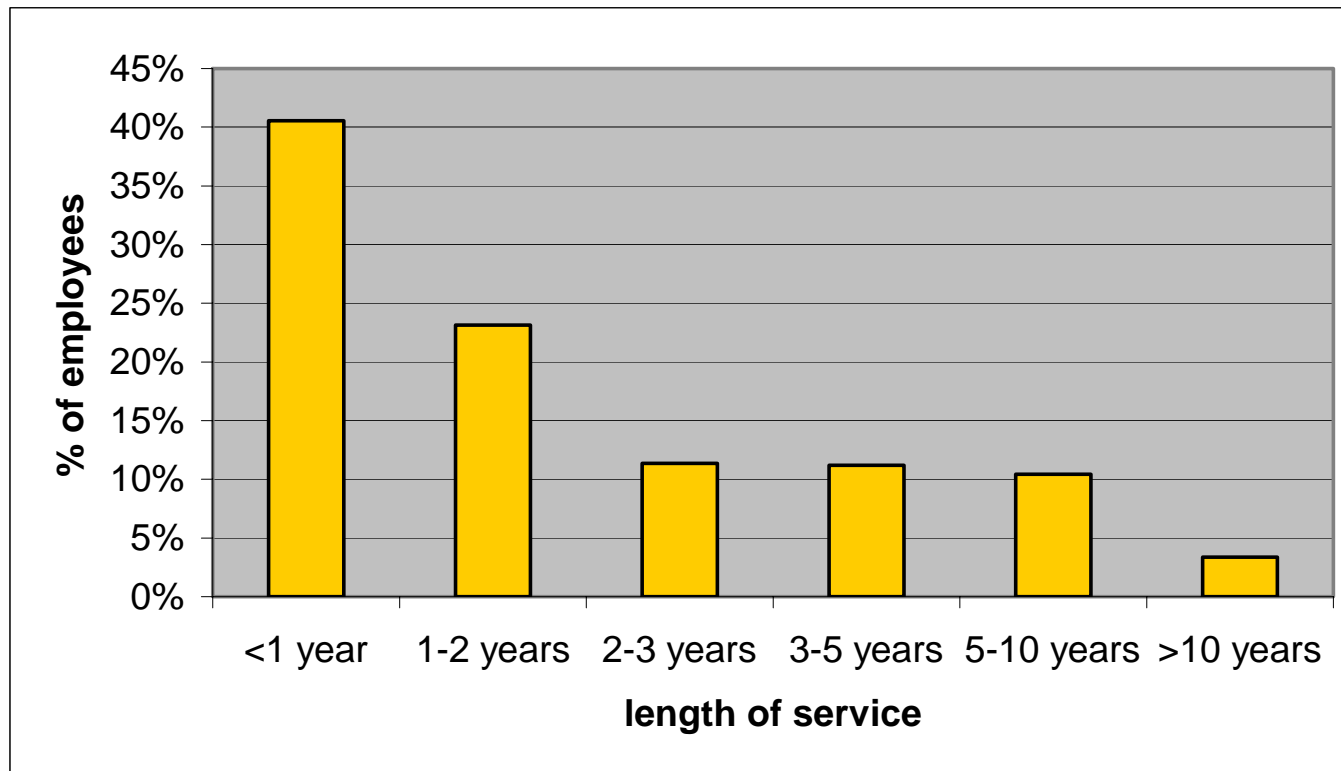
## Newcrest Operations







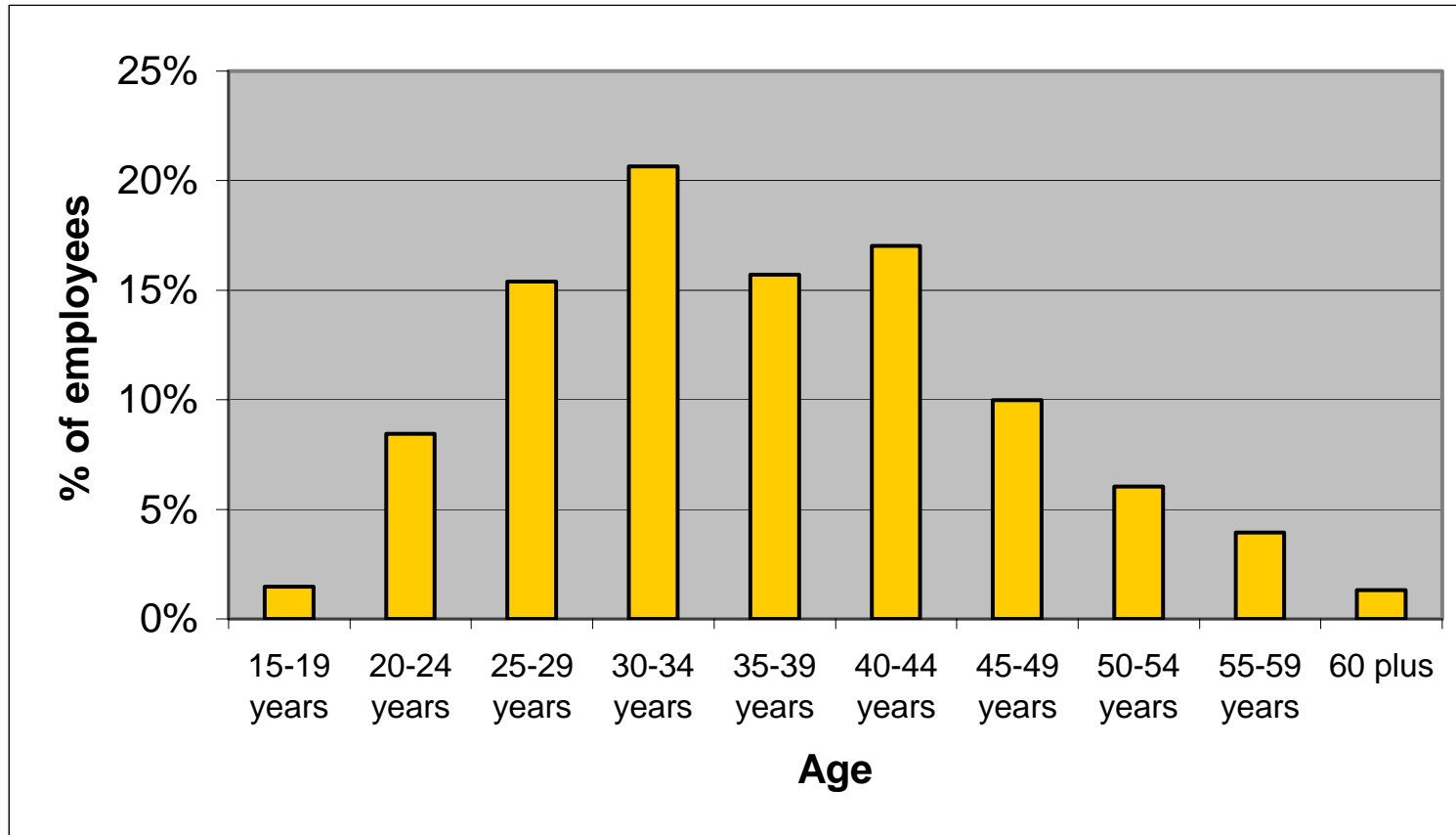
## Employee Profile: Length of Service



Average length of service = 2.5 years  
41% of employees with less than 1 year's service  
(Australia and Americas)



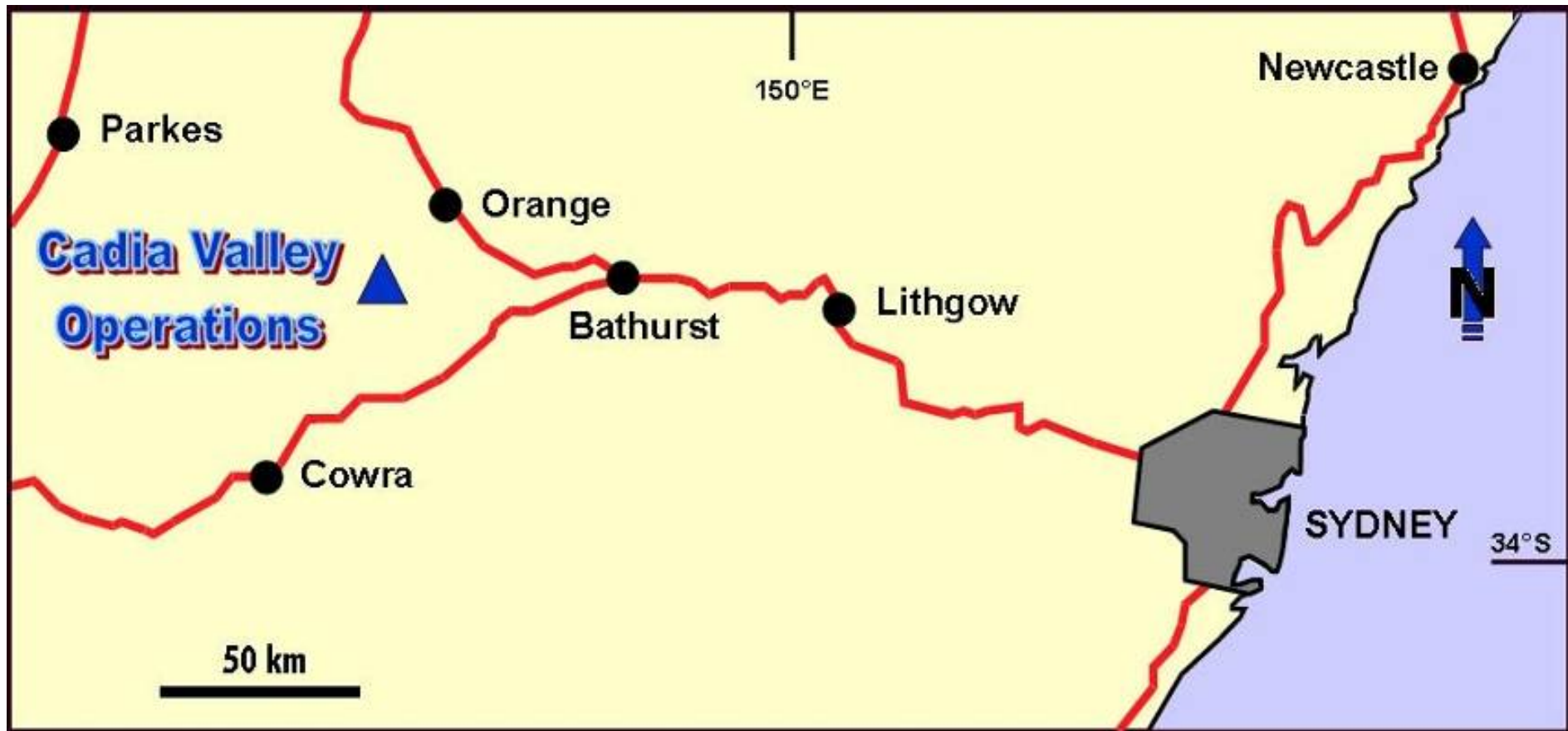
## Employee Age Profile



Average age of Newcrest employees = 37 years  
(Australia and Americas)

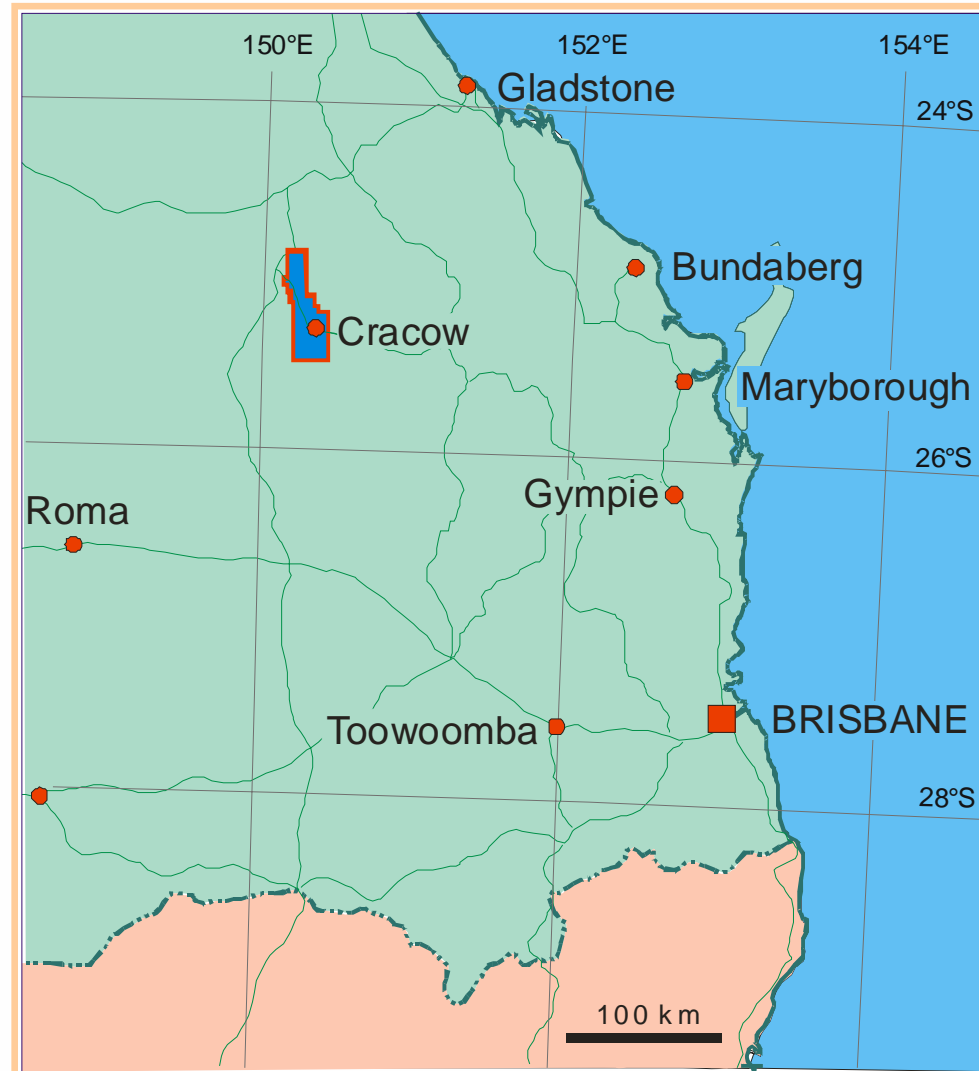


## Cadia Valley Location





## Cracow Location





## Telfer Location









## Americas Exploration





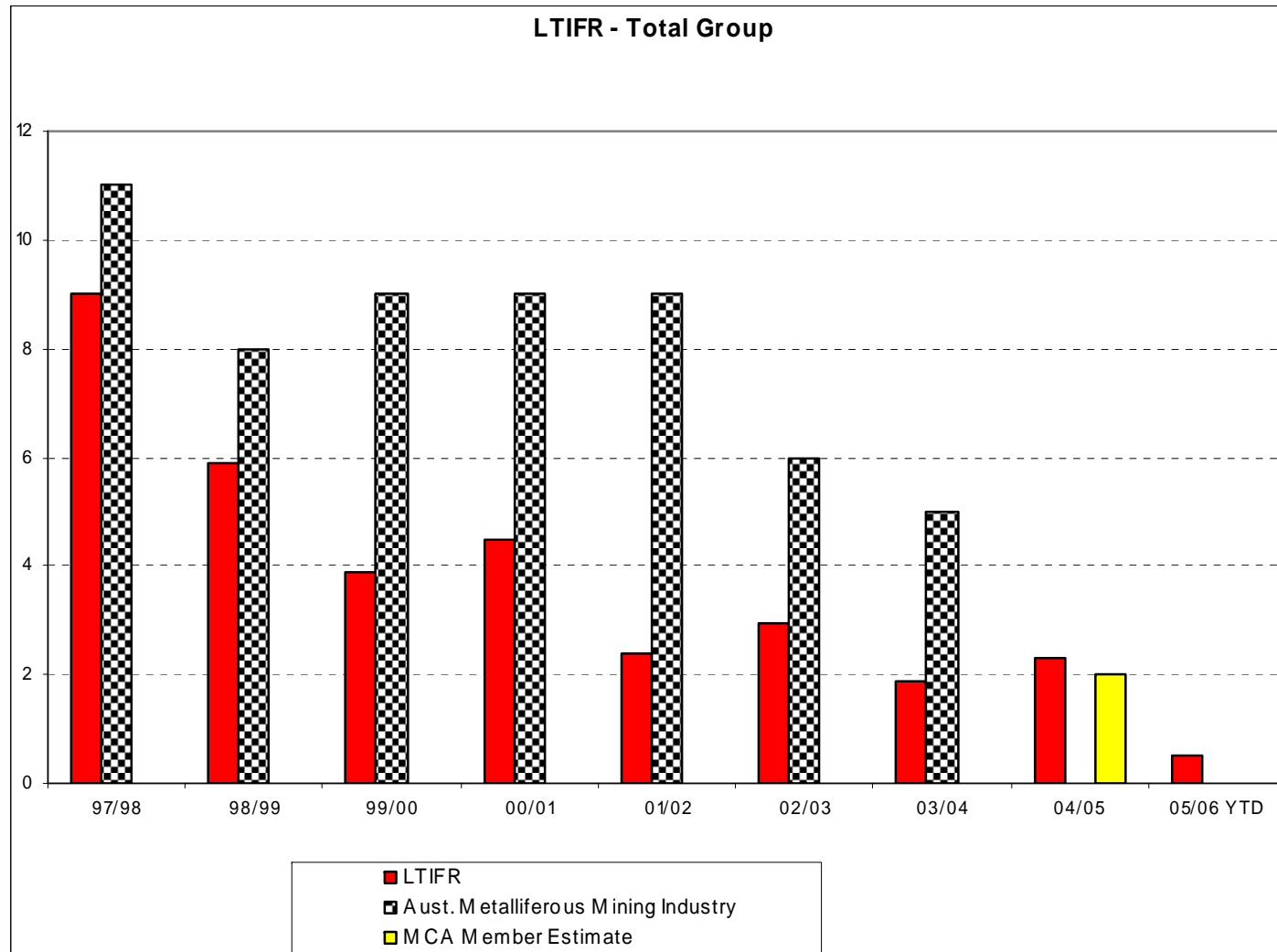
## Turnover (year end 31 Aug 2005)

Exploration	5.1%
CVO	15.9%
Cracow	22.5%
Gosowong (expatriates only)	23.8%
Telfer	29.6%
Corporate	18.3%
<b>NEWCREST</b>	<b>20.1%</b>

- Newcrest figures do not include 'dismissals'
- ABS 2001: Labour mobility (**all** employee job changes) = 21.7% for the mining industry – highest of any industry
- Turnover in FIFO operations = 21% (includes dismissals). *Source: Workforce turnover in FIFO mining Operations in Australia: an exploratory study, Centre for Social Responsibility in Mining and Minerals Industry Safety and Health Centre*



## Metalliferous Mining Industry LTIFR Trends







**Thank you for your attention**