



ASX Code: AMI

*Building the Next Mid-Tier Gold and Base Metals Producer*



Sydney Mining Club October 2018

Jim Simpson, Managing Director & CEO

This presentation has been prepared by Aurelia Metals Limited ("AMI" or the "Company"). It should not be considered as an offer or invitation to subscribe for or purchase any securities in the Company or as an inducement to make an offer or invitation with respect to those securities. No agreement to subscribe for securities in the Company will be entered into on the basis of this presentation.

This presentation contains forward-looking statements that are not based on historical fact, including those identified by the use of forward-looking terminology containing such words as "believes", "may", "will", "estimates", "continue", "anticipates", "intends", "expects", "should", "schedule", "program", "potential" or the negatives thereof and words of similar import.

AMI cautions that these forward-looking statements are subject to risks and uncertainties that could cause actual events or results to differ materially from those expressed or implied by the statements. The Company believes that the estimates are reasonable, but should not be relied upon.

AMI makes no representation, warranty (express or implied), or assurance as to the completeness or accuracy of these projections and, accordingly, expresses no opinion or any other form of assurance regarding them. The Company does not intend to publish updates or revisions of any forward-looking statements included in this document to reflect Aurelia's circumstances after the date hereof or to reflect subsequent market analysis, other than to the extent required by law.

By its very nature, production and exploration for gold and base metals is a high risk business and is not suitable for certain investors. Potential investors should consult their stockbroker or financial advisor. There are a number of risks, both specific to AMI and of a general nature which may affect the future operating and financial performance of AMI and the value of an investment in AMI including and not limited to economic conditions, stock market fluctuations, commodity price movements, regional infrastructure constraints, equipment availability, timing of approvals from relevant authorities, regulatory risks, operational risks, reliance on key personnel and foreign currency fluctuations.

You should not act or refrain from acting in reliance on this presentation material. This presentation does not purport to be all inclusive or to contain all information which its recipients may require in order to make an informed assessment of the Company's prospects. You should conduct your own investigation and perform your own analysis in order to satisfy yourself as to the accuracy and completeness of the information, statements and opinions contained in this presentation before making any investment decision.

ASX code

AMI

Shares on issue

865,879,333

Issued Capital – unlisted perf. Rights  
Market Capitalisation

6.57M  
\$675M / 78c

Major Shareholders

Tribeca 6.6%  
AusSuper 6.4%  
EleyGriffiths 5.7%  
Glencore 5.4%

Non – Executive  
Chairman

Cobb Johnstone

Managing Director &  
Chief Executive  
Officer

Jim Simpson

Non-Executive  
Directors

Michael Menzies  
Paul Espie  
Lawrie Conway  
Susie Collett

Chief Financial Officer  
& Company Secretary

Tim Churcher

General Managers

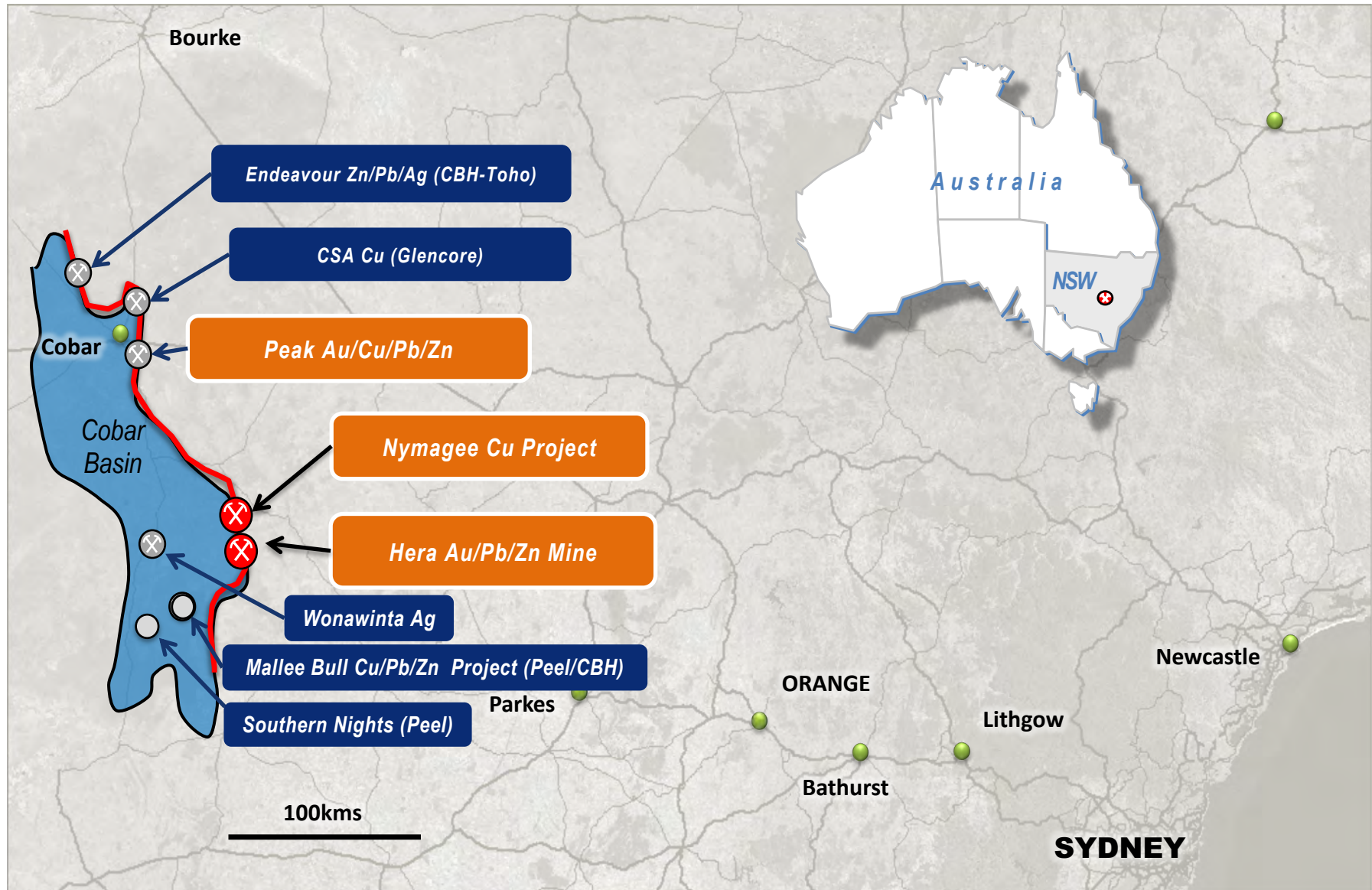
Scott Ramsay – Hera  
David Pelchen – Peak Gold



- ✓ Turnaround at Hera resolving processing issues, better mining practices, increasing throughput rate and reducing site costs.
- ✓ Hera providing one of the lowest cost operations in Australia
- ✓ Strong cash flow with all debt repaid and a net cash position of \$67M (30 June 18)
- ✓ Acquisition of Peak Gold Mines completed on 10 April 2018
- ✓ Purchase of Peak Gold Mines repaid in just over three months
- ✓ Predicted LOM – Hera / Nymagee (8 years) Peak (10 years)

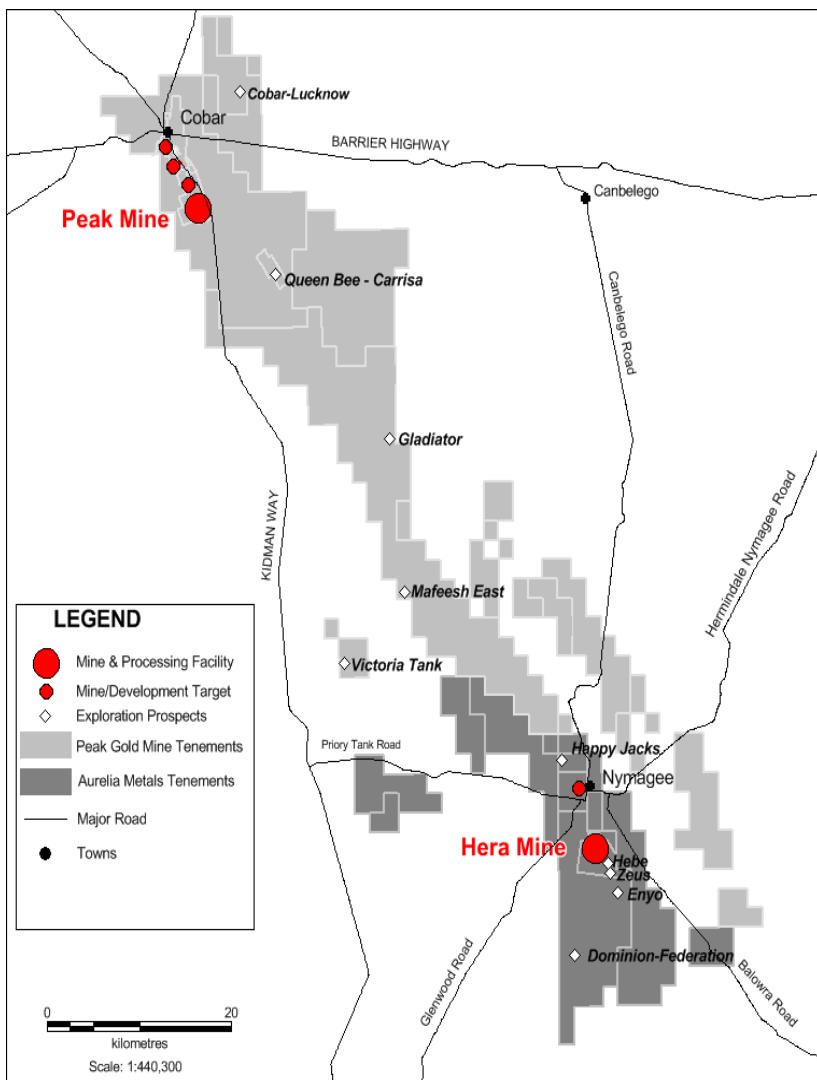


# Key Assets – Located in the productive Cobar Region



# The Peak a Perfect Growth Opportunity for Aurelia

**Acquisition positions Aurelia with a dominant landholding in a highly endowed mineral province**



## Neighbouring Operations

Located 75km (90km by road) north of Aurelia's Hera operations, offering significant operational synergies

## Diversifies Production

Aurelia will have two wholly-owned operating mines and processing facilities in the Cobar basin

## Provides Increased Copper Exposure

Potential for higher Cu production at Peak establishes Aurelia as a producer of gold, copper, lead and zinc

## Growth in Production

Group production outlook for FY19 of (Hera 40 - 45 Peak 60 - 80) 100-125 koz Au

## Strong Cash Flow Generator

Peak positioned to generate strong free cash flow. FY19 AISC outlook of A\$900 – A\$1,100/oz Au

## Unique Insight

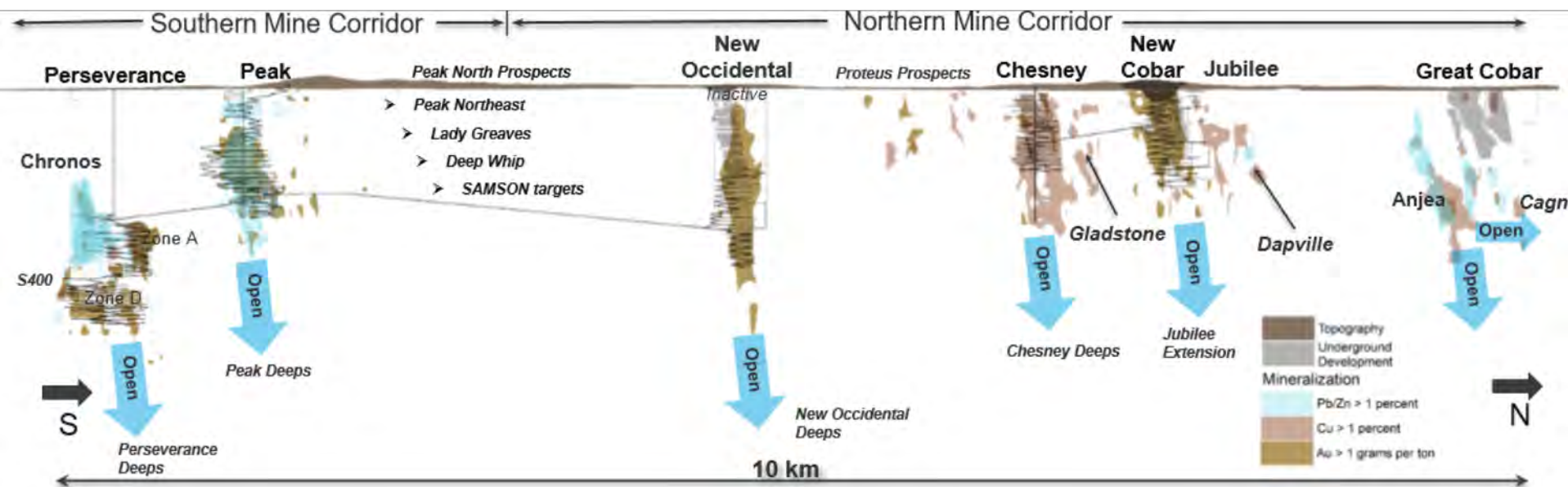
Aurelia's CEO has an intimate knowledge of Peak, as ex-GM of the operations for more than 5yrs

## Regional Foothold

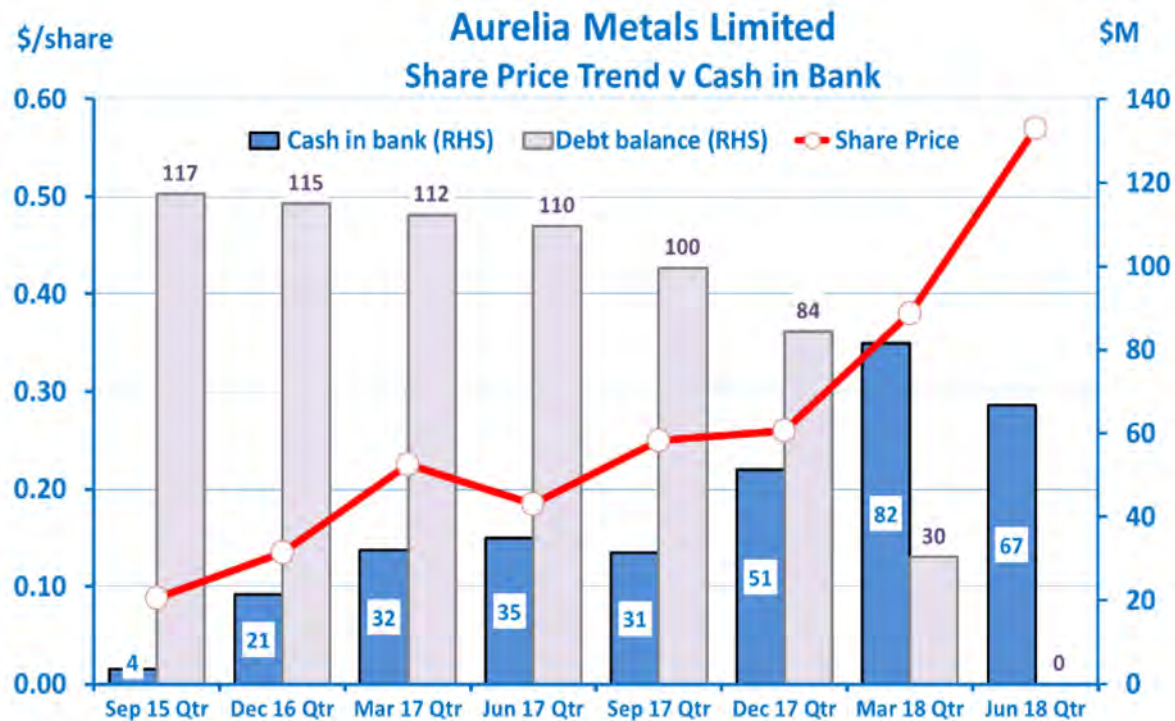
Regional consolidation in the polymetallic Cobar Basin, with two major processing plants

# Peak Mines - A 10km Corridor of High Grade Mines

- Mining from two underground mines currently:
  - I. Southern Corridor - Perseverance/Chronos
  - II. Northern Corridor – Jubilee and Great Cobar Project
- Mining Inventory indicating potential for a 10 year mine life
- Significant scope to discover further ore sources within this highly mineralised 10km corridor, including extensions at depth in Perseverance, Peak, Chesney, New Cobar and Great Cobar and up dip at Chronos and discoveries not yet included into mine plan (Gladstone, Dapville and Queen Bee)
- Great Cobar is a copper, gold, lead, zinc opportunity, similar to the Company's existing Nymagee copper, lead, zinc project



- Investec debt of \$45M repaid
- Net cash position \$67M (30 June 2018)





Hera Resource Estimate	Tonnes (kt)	NSR (A\$/t)	Au (g/t)	Pb (%)	Zn (%)	Ag (g/t)	Cu (%)
Measured	1007	248	2.6	2.7	4.2	20	N/A
Indicated	951	228	2.7	2.1	3.2	17	N/A
Inferred	558	239	1.7	3.5	4.7	51	N/A
<b>Total</b>	<b>2,516</b>	<b>238</b>	<b>2.44</b>	<b>2.65</b>	<b>3.93</b>	<b>25.7</b>	N/A

Nymagee Resource Estimate	Tonnes (kt)	NSR (A\$/t)	Au (g/t)	Pb (%)	Zn (%)	Ag (g/t)	Cu (%)
Indicated	3640	138	N/A	0.85	1.65	14.4	1.31
Inferred	140	109	N/A	0.57	1.2	11.3	1.10
<b>Total</b>	<b>3,780</b>	<b>136</b>	N/A	<b>0.84</b>	<b>1.63</b>	<b>14.3</b>	1.31

Peak Resource Estimate	Tonnes (kt)	NSR (A\$/t)	Au (g/t)	Pb (%)	Zn (%)	Ag (g/t)	Cu (%)
Measured	2,141	239	2.07	1.38	1.40	14.4	1.24
Indicated	5,758	226	1.82	0.97	1.00	9.77	1.50
Inferred	2,989	187	1.01	0.63	0.84	7.8	1.63
<b>Total</b>	<b>10,888</b>	<b>218</b>	<b>1.64</b>	<b>0.96</b>	<b>1.04</b>	<b>10.1</b>	<b>1.48</b>

\* Based on a \$120/t NSR

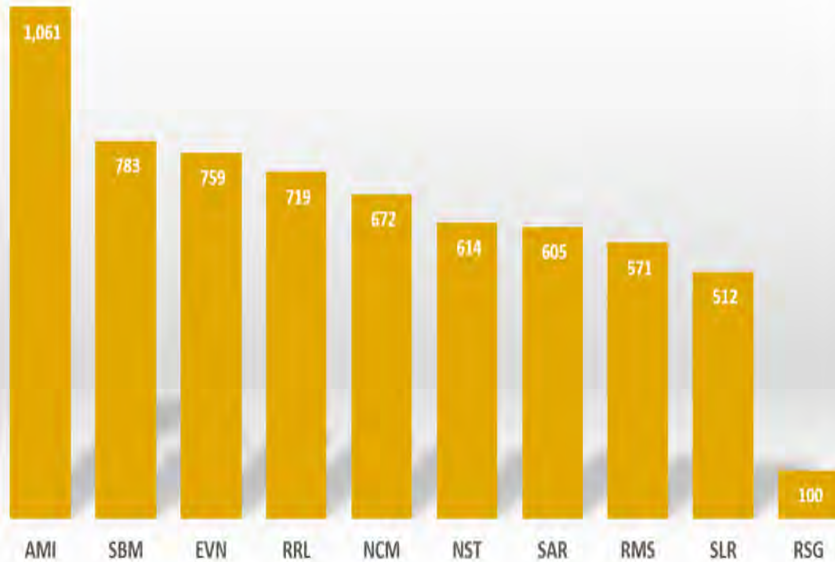
Hera Reserve Estimate	Tonnes (kt)	NSR (A\$/t)	Au (g/t)	Pb (%)	Zn (%)	Ag (g/t)	Cu (%)
<b>Total</b>	<b>1,117</b>	<b>256</b>	<b>3.05</b>	<b>2.84</b>	<b>4.36</b>	<b>22.7</b>	<b>N/A</b>

Peak (Au/Cu/Pb) Reserve Estimate	Tonnes (kt)	NSR (A\$/t)	Au (g/t)	Pb (%)	Zn (%)	Ag (g/t)	Cu (%)
Proven	290	185	1.67	0.1	N/A	1.67	1.77
Probable	1,753	268	3.78	0.75	N/A	3.78	1.33
<b>Total</b>	<b>2,042</b>	<b>257</b>	<b>3.48</b>	<b>0.66</b>	<b>N/A</b>	<b>3.48</b>	<b>1.39</b>

Peak (Pb/Zn) Reserve Estimate	Tonnes (kt)	NSR (A\$/t)	Au (g/t)	Pb (%)	Zn (%)	Ag (g/t)	Cu (%)
Proven	14	265	0.44	5.88	5.87	34.7	0.35
Probable	518	262	0.39	5.72	6.15	31.7	0.17
<b>Total</b>	<b>532</b>	<b>262</b>	<b>0.4</b>	<b>5.72</b>	<b>6.15</b>	<b>31.8</b>	<b>0.17</b>

\* Based on a \$150/t NSR

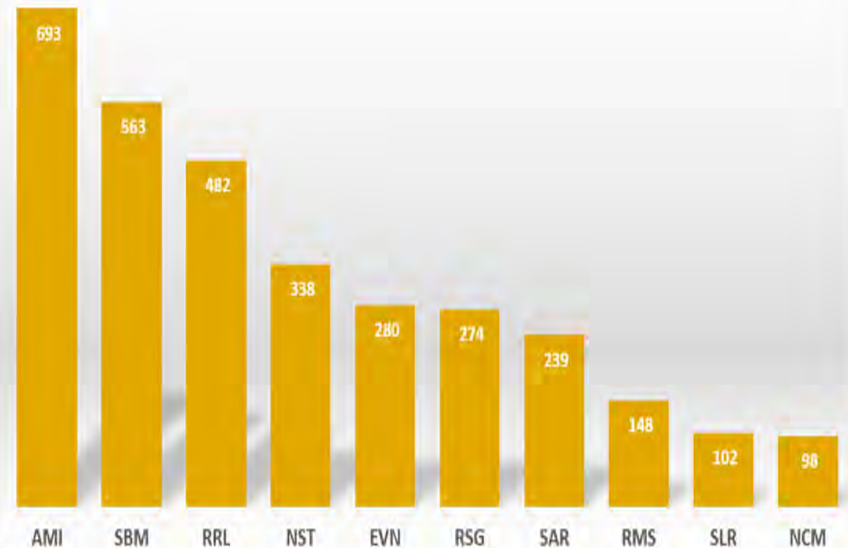
FY2018 Net Cash Flows by Operating Activities per Au Equivalent Ounce Produced (A\$/oz)



Ulrich, 2018

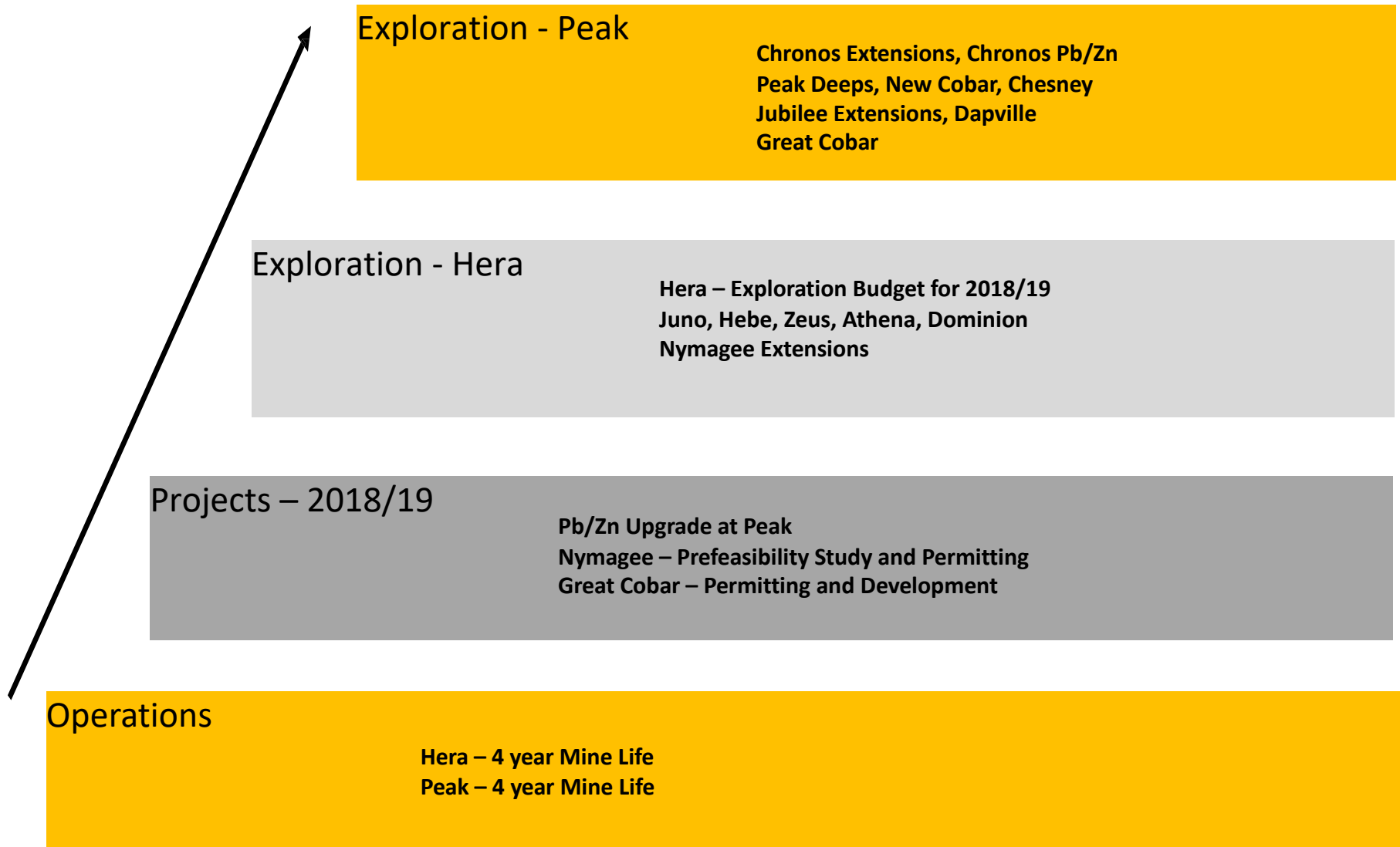
Created by Aurum Analytics

FY2018 Net Profit After Tax per Au Equivalent Ounce Produced (A\$/oz)



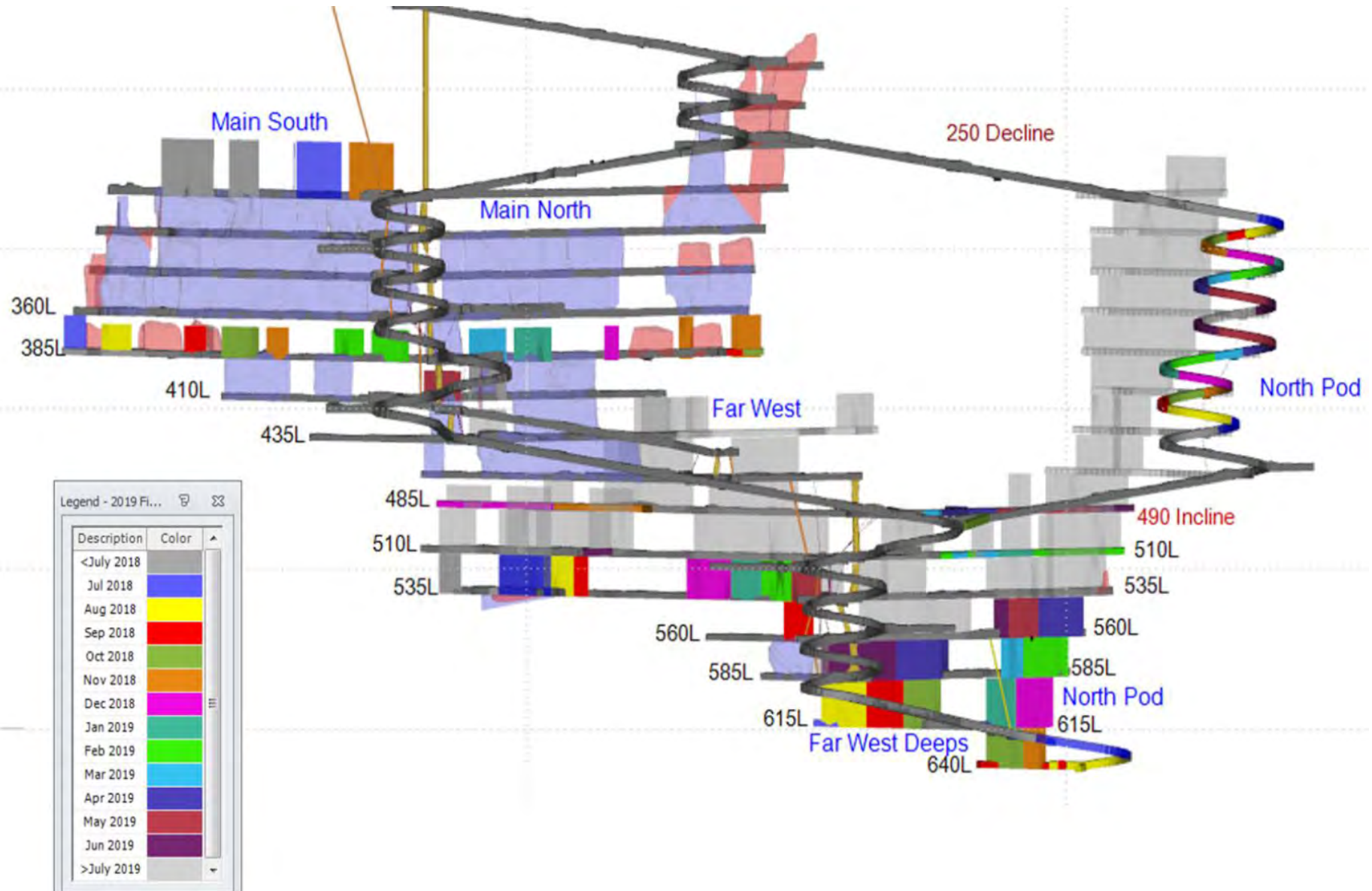
Ulrich, 2018

Created by Aurum Analytics

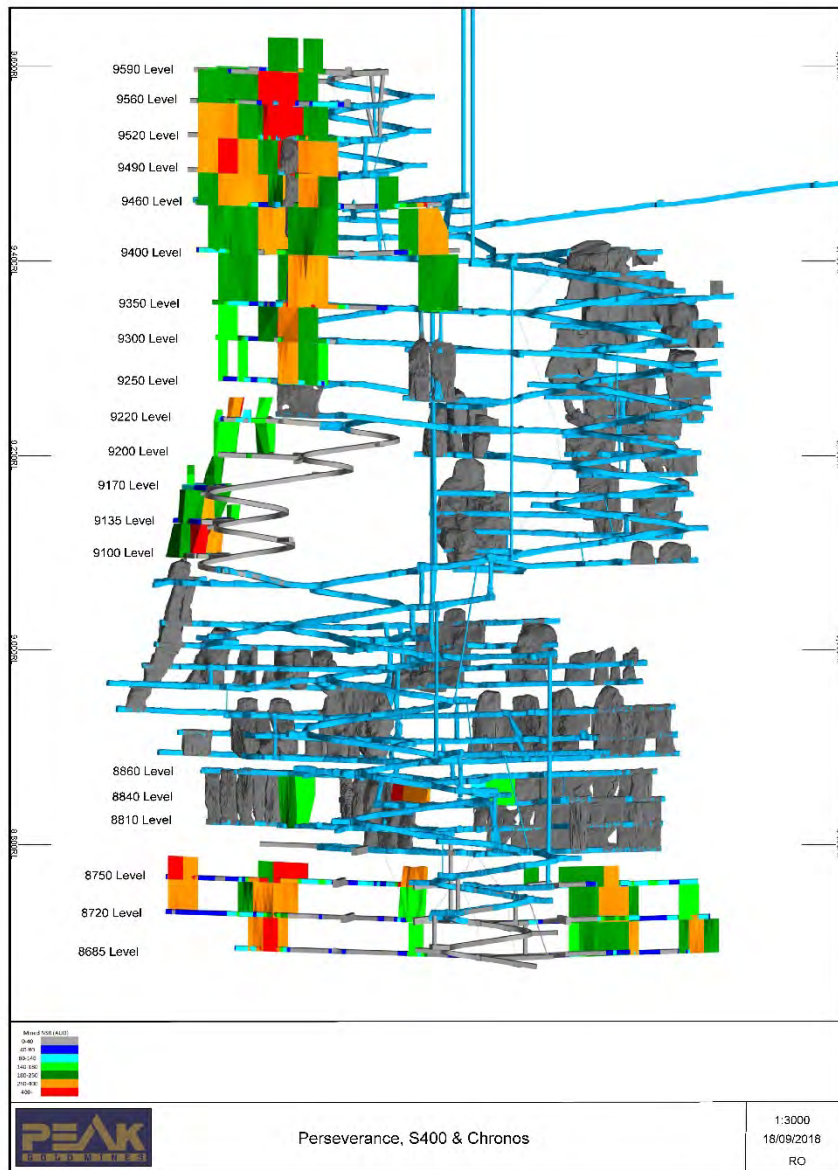




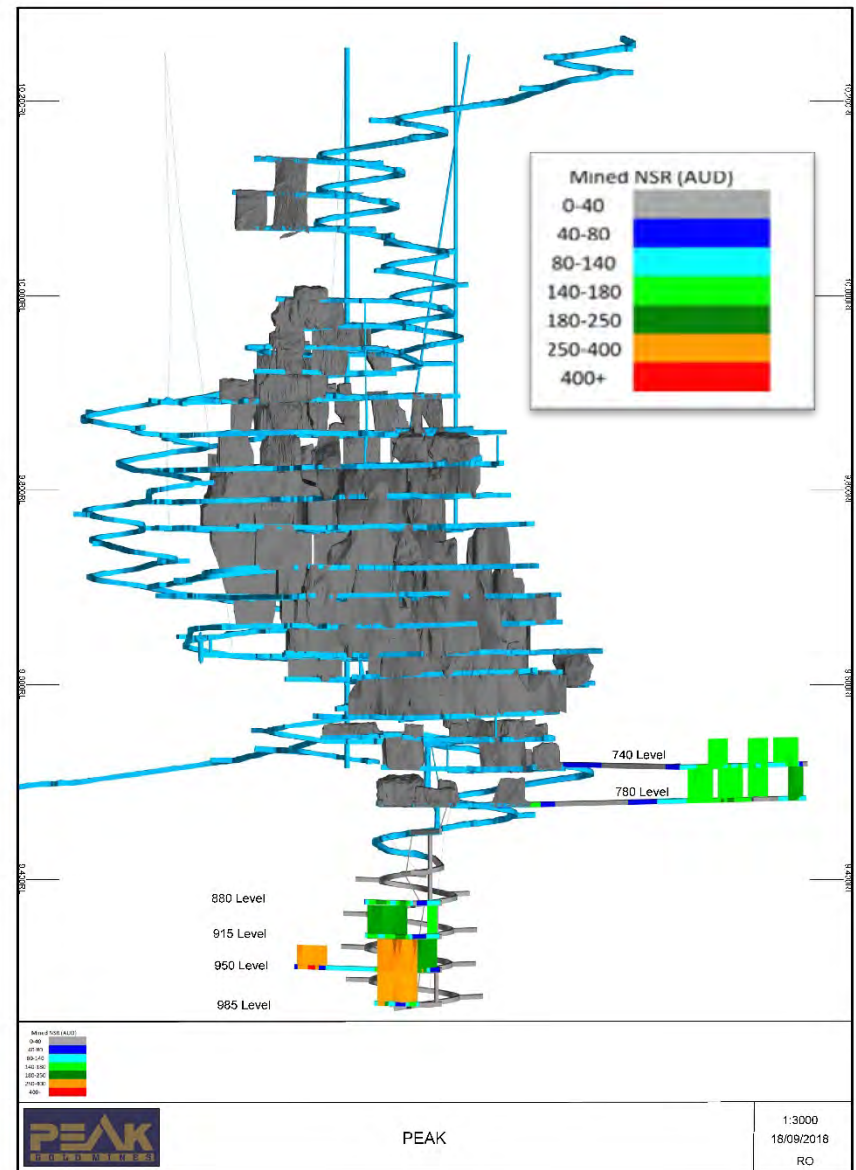
# Hera - North Pod ready to be mined



## Perseverance Development

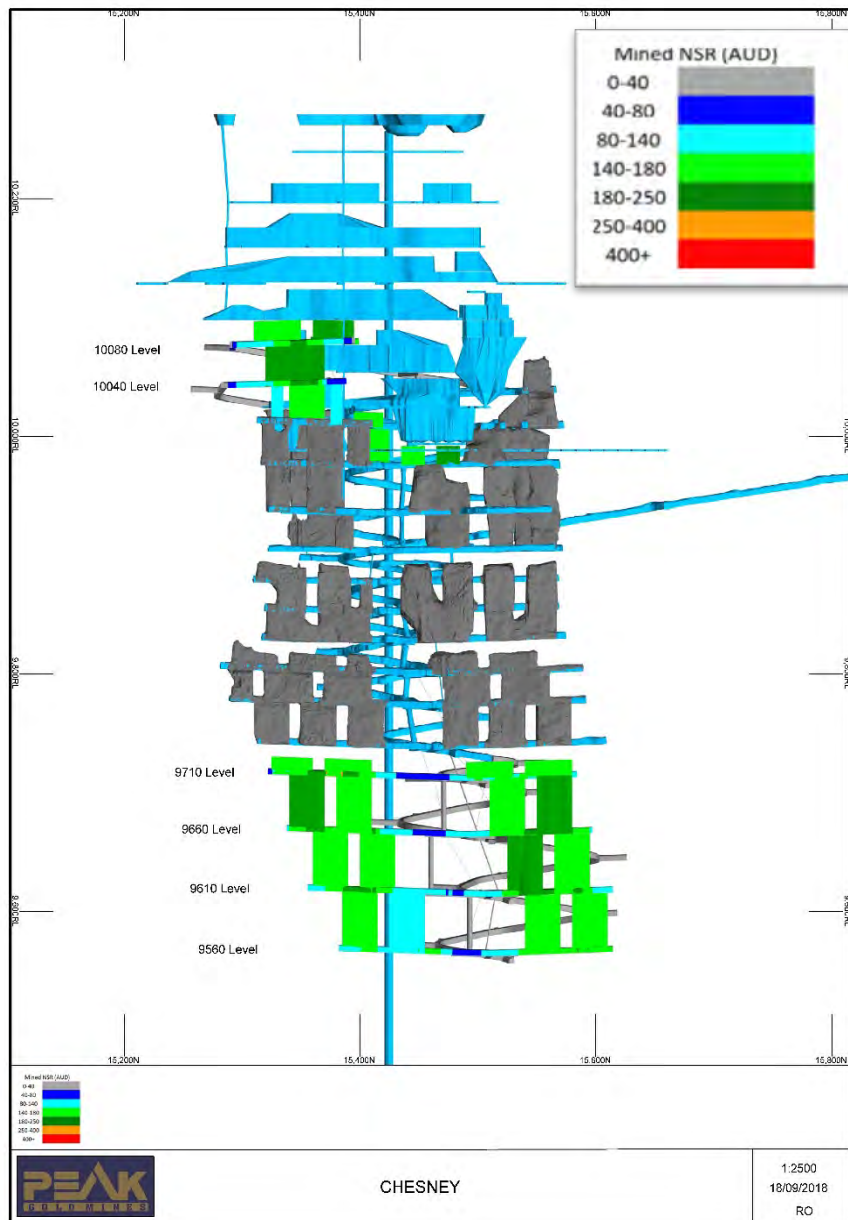


## Peak Development

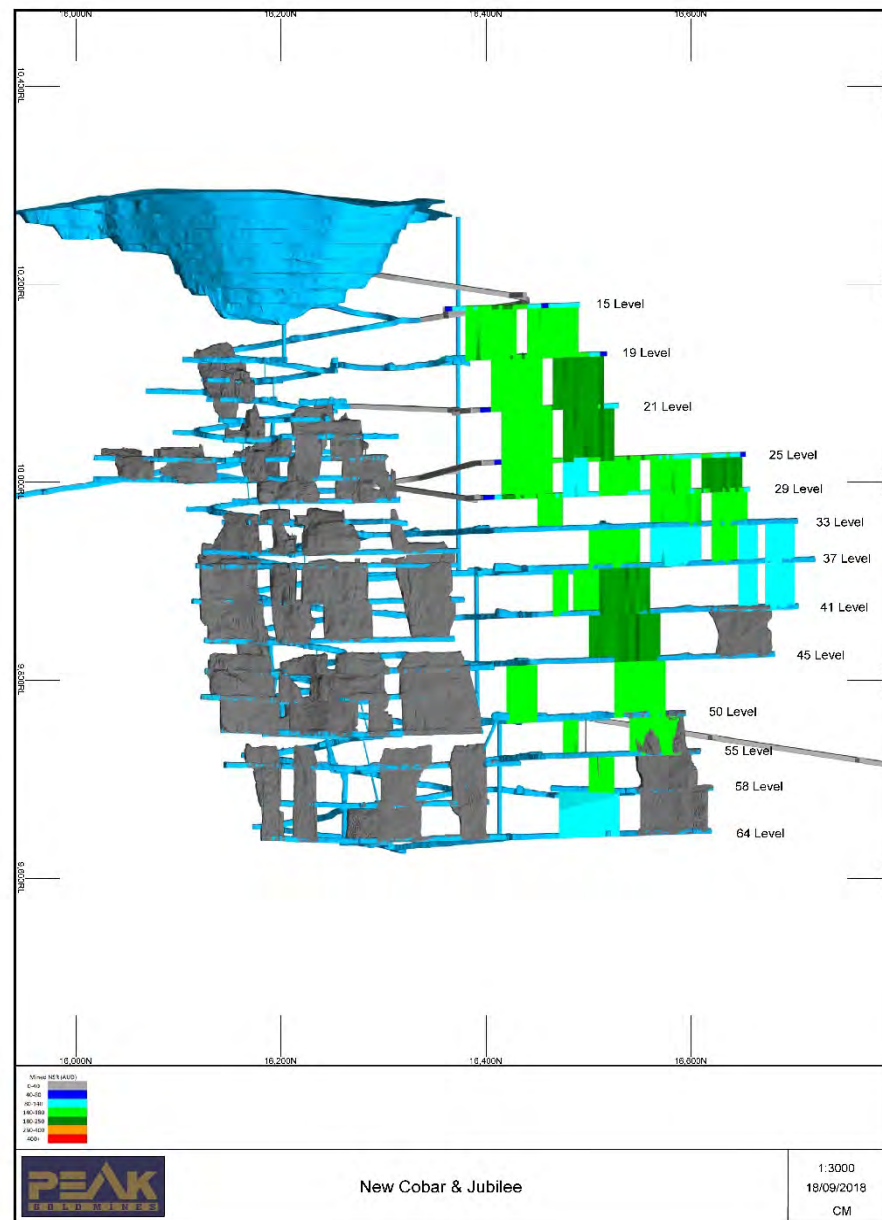




## Chesney Development



## New Cobar and Jubilee Development

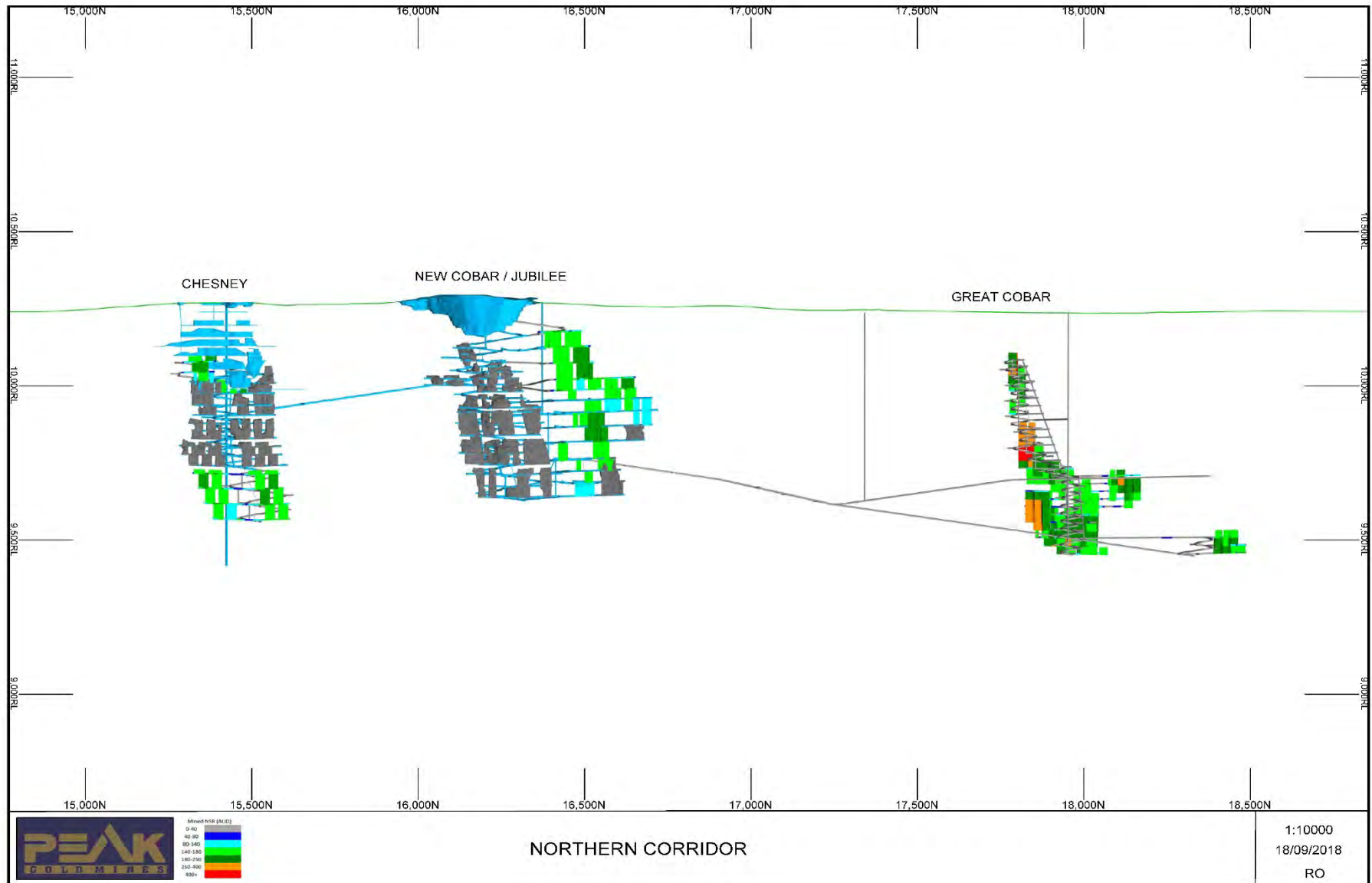


- ✓ Pb/Zn Processing upgrade at Peak
- ✓ Great Cobar approvals with exploration decline
- ✓ Nymagee Pre-Feasibility Study FY2018/19

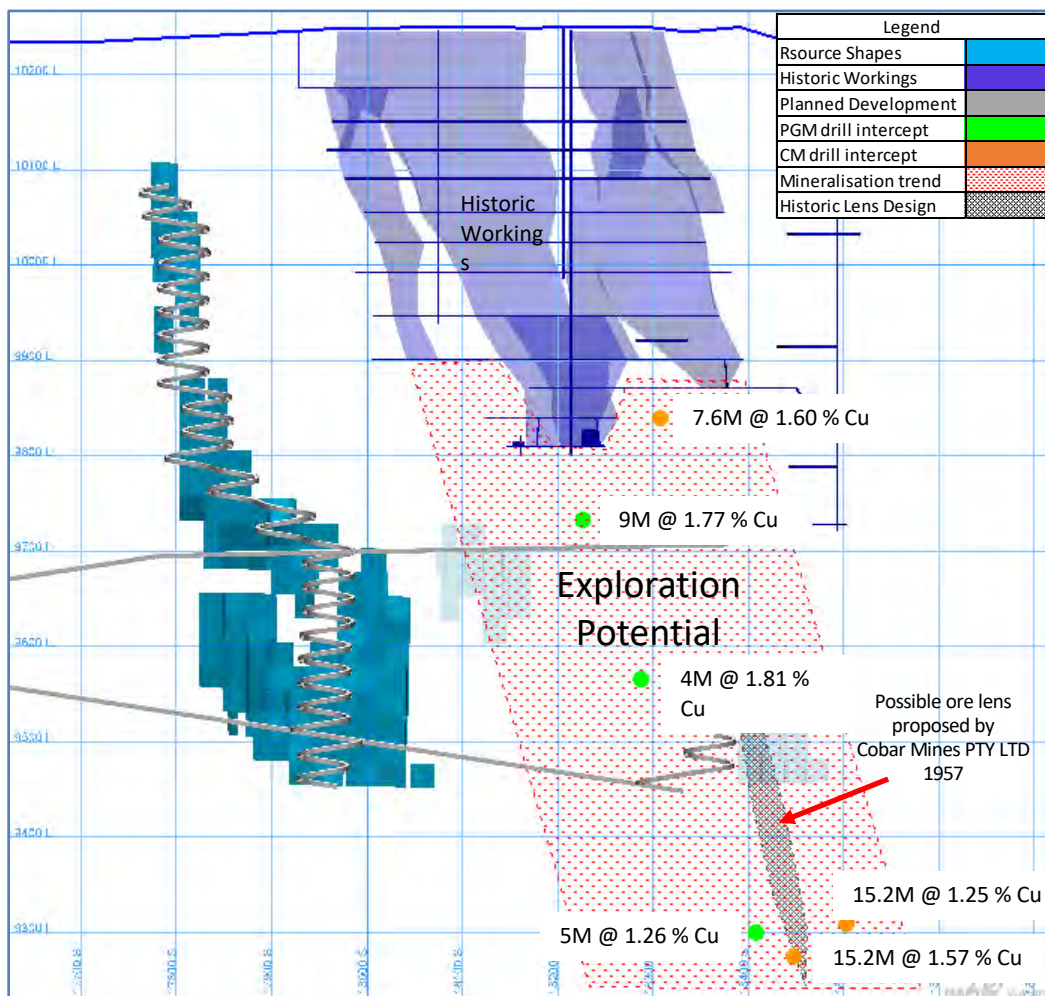


- ✓ Installing Pb and Zn flotation, thickeners, stock tanks, filtration and concentrate storage.
- ✓ Improving process water to assist Cu and Pb/Zn flotation
- ✓ Long lead items ordered

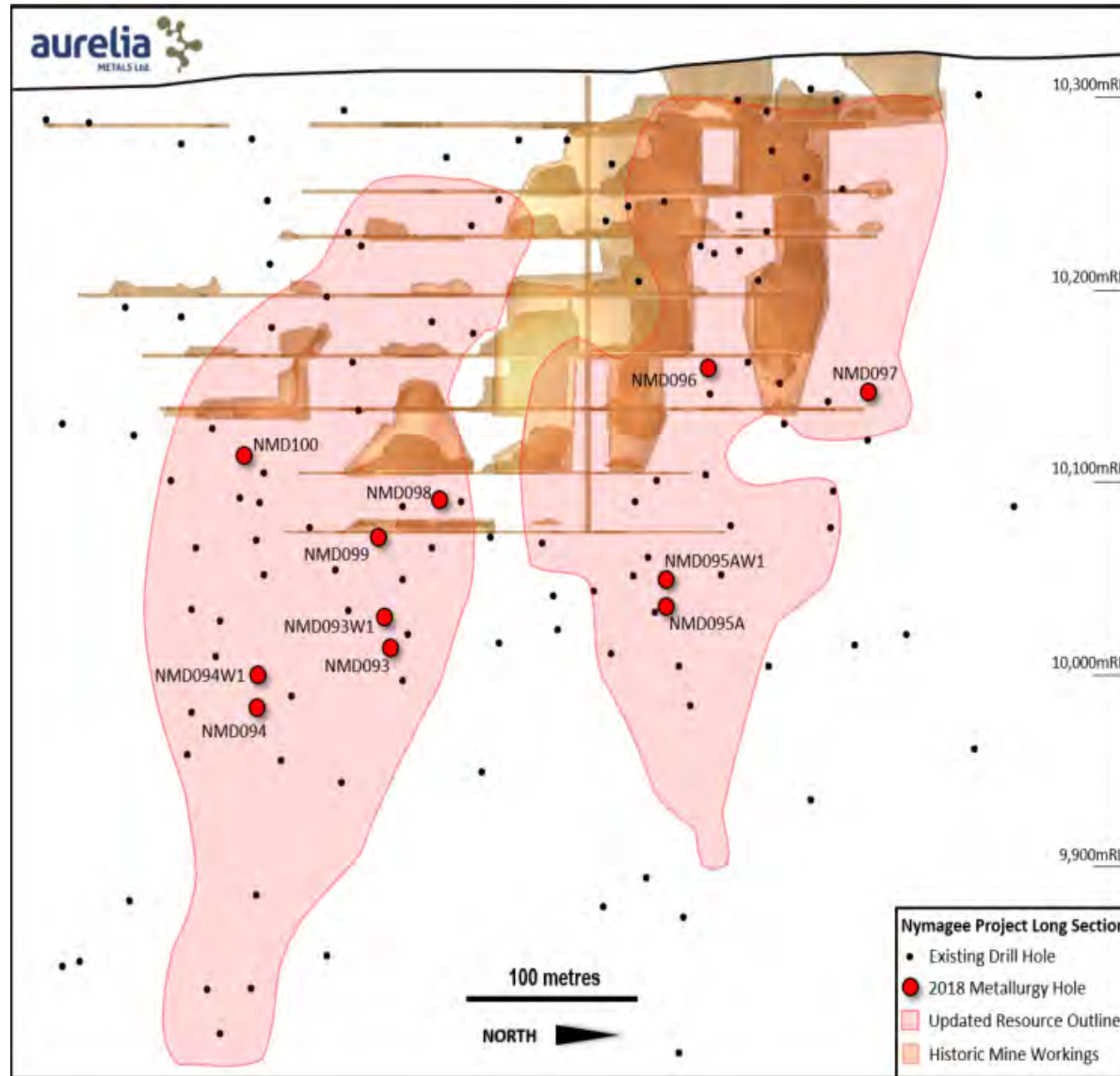
# Project Development - Great Cobar Exploration Decline



# Project Development - Great Cobar Exploration Decline



## Nymagee Long Section

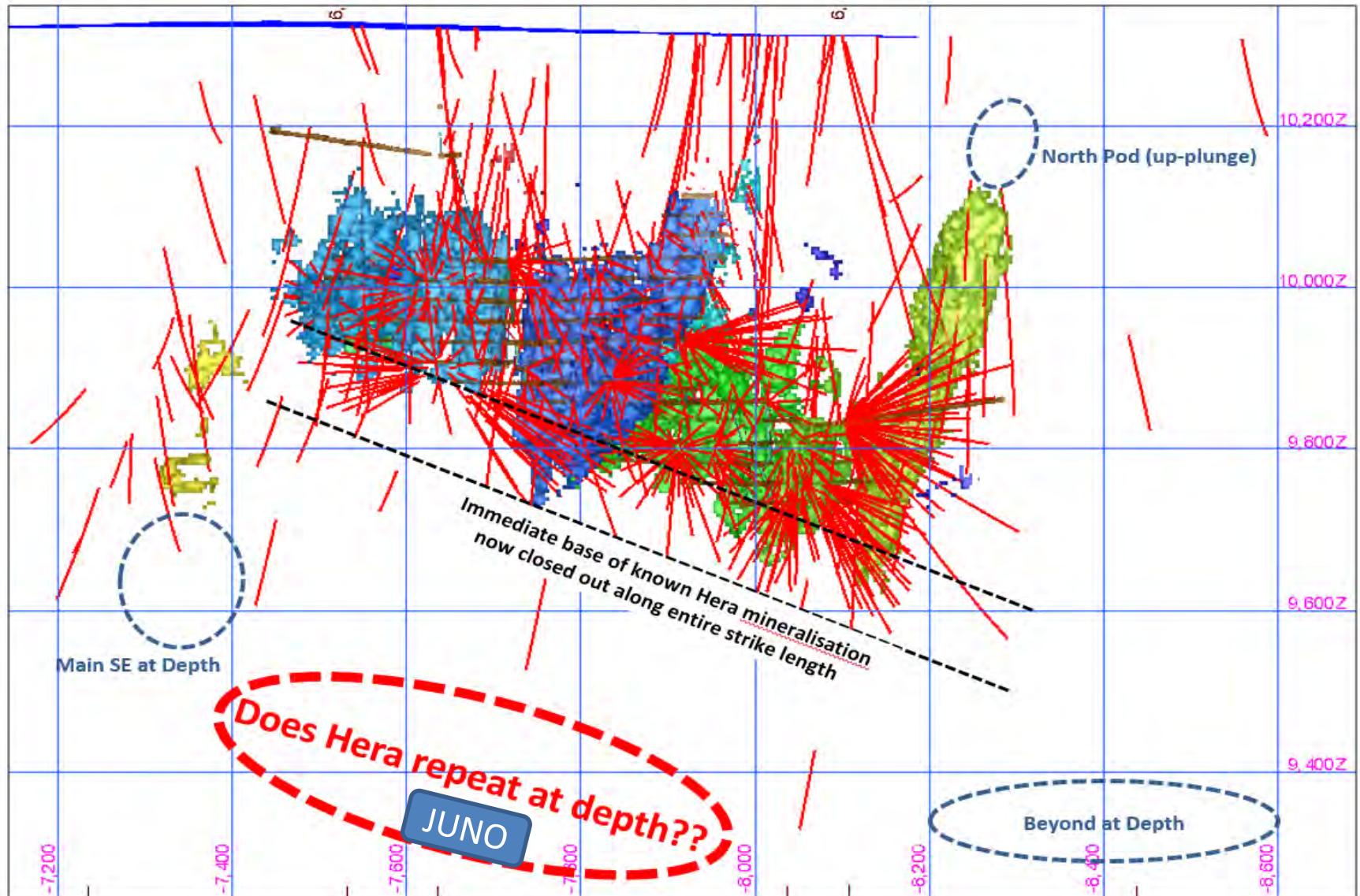


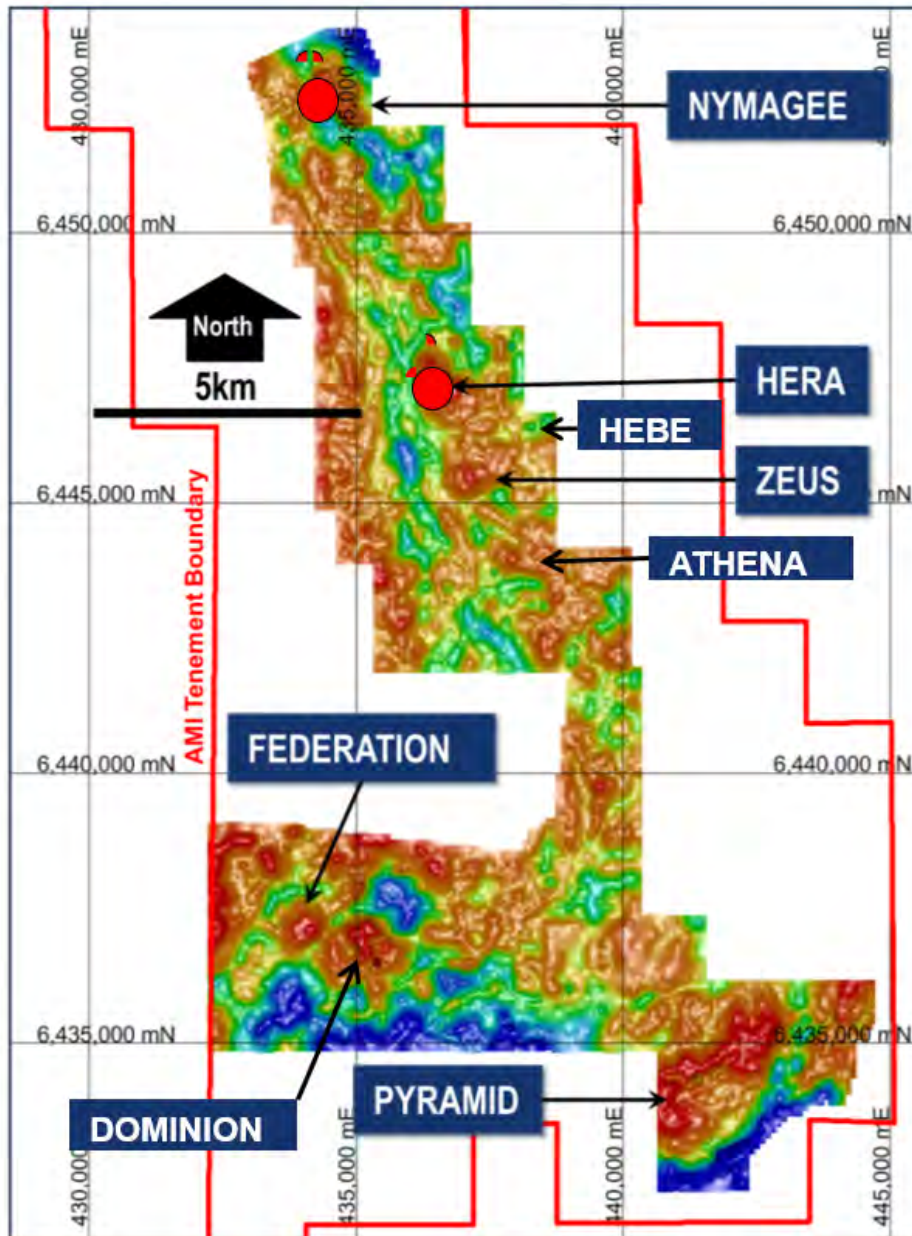
## Nymagee Cu/Pb/Zn

- Pre-Feasibility work underway with environmental and metallurgical studies.
- Exploration potential at depth

*Detail on the Nymagee Resource can be found in the Company's 2016 Annual Report*







## Mine Corridor

- Hera-Nymagee corridor remains highly prospective
- The Hera & Nymagee deposits are both marked by prominent gravity highs
- Several gravity targets have been defined along 20km of strike
- Exploration of corridor proposed for 2019FY