

JOHN RICHARDS
Chairman

THE BLOOMFIELD GROUP
for
THE SYDNEY MINING CLUB

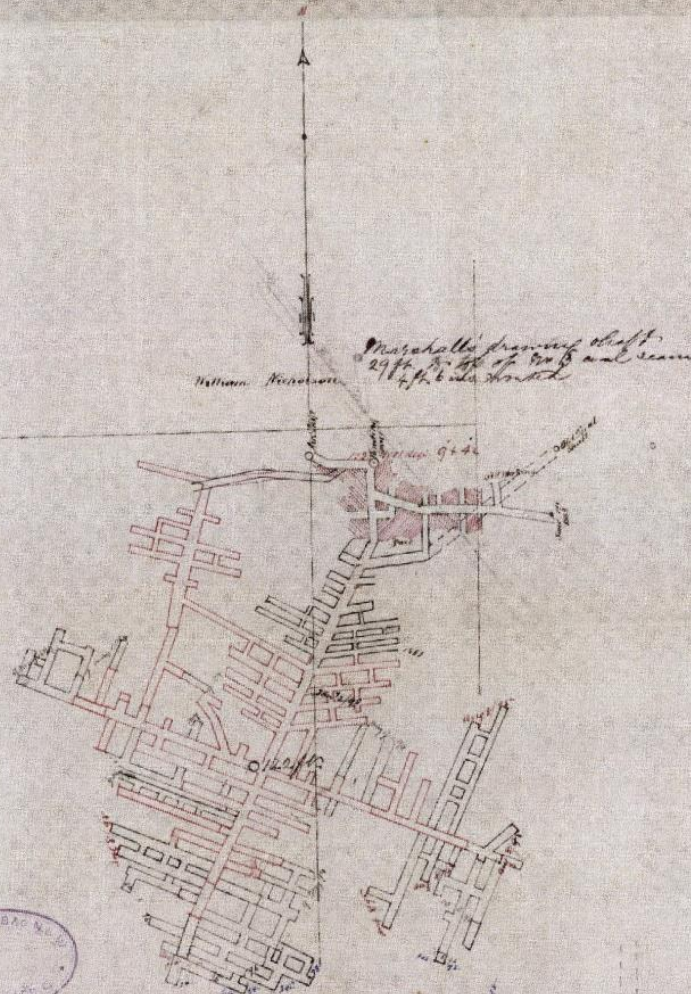






W 3000
& 1500

Vertical text on the right edge of the page, possibly a scale or reference.



BLOOMFIELD Colliery

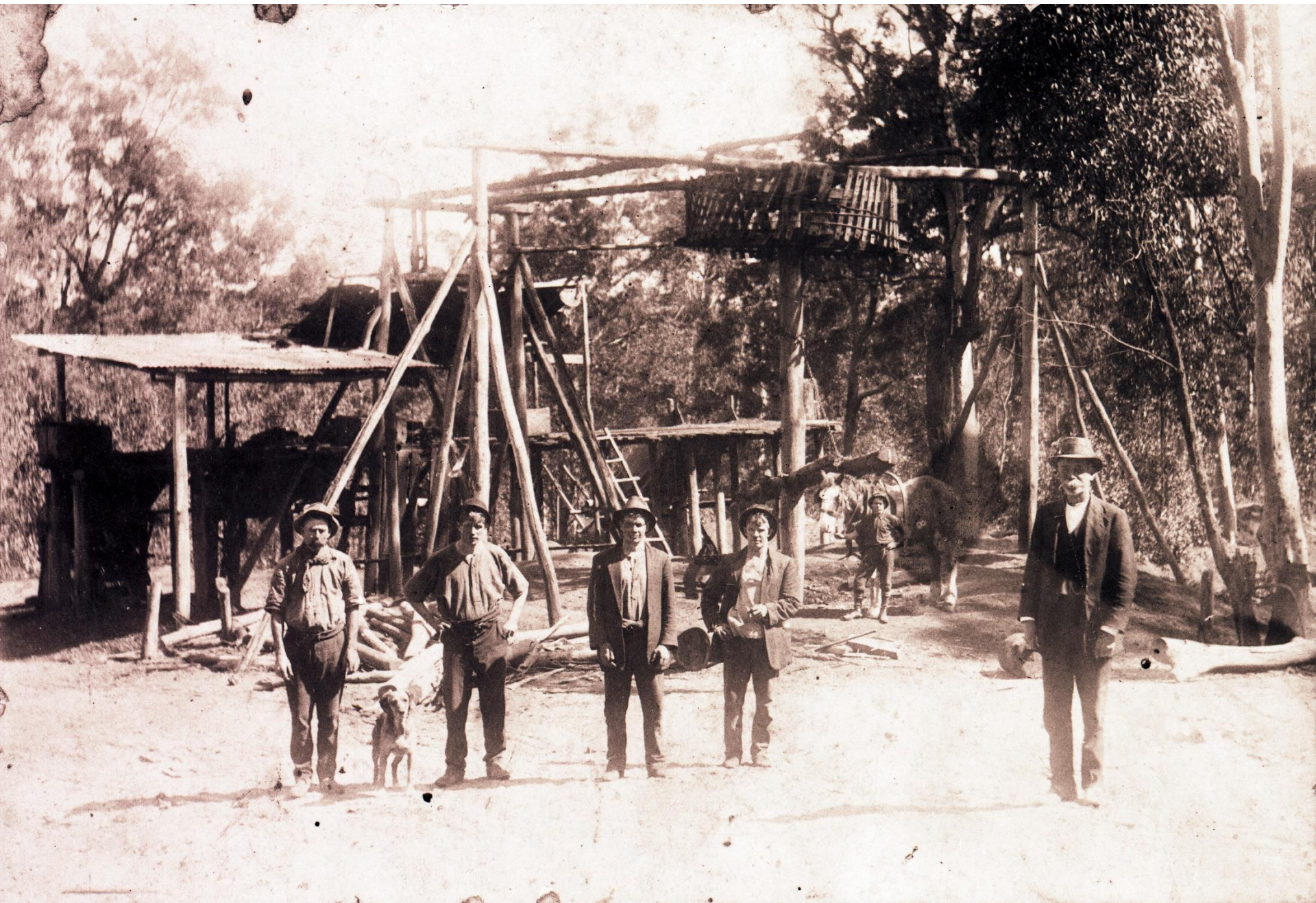
Workings in the No. 2 (four mile east series) coal seam, at four mile creek, on the parcels of Westland, County of Northumberland &c.

Masthead
 G. H. M. S.
 June 12th 1888

Sections taken at

A	B	L	D	F	G

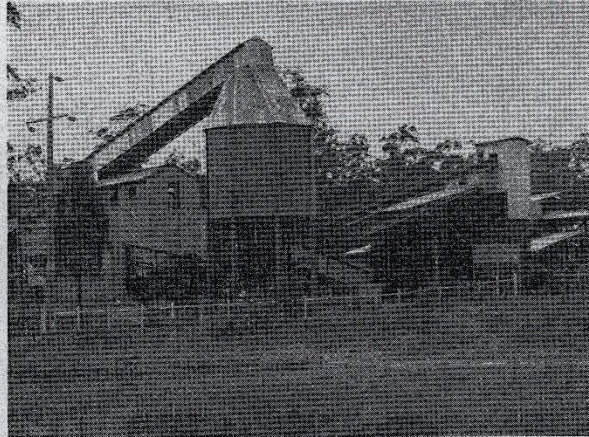
Roof
 Coal



Bloomfield Collieries Pty. Limited

**COLLIERY PROPRIETORS
AND
COAL EXPORTERS**

**FULLY
MECHANISED**



**COAL
PREPARATION**

BLOOMFIELD No. 4 COLLIERY, EAST MAITLAND

BLOOMFIELD WASHED GRADED

COAL

FOR ELECTRICITY GENERATION

GENERAL INDUSTRIAL STEAMING

COKING

ENQUIRIES TO:

R. W. MILLER & CO. PTY. LTD.

(SELLING AGENTS)

19 BRIDGE STREET, SYDNEY

TEL. BU 4361.

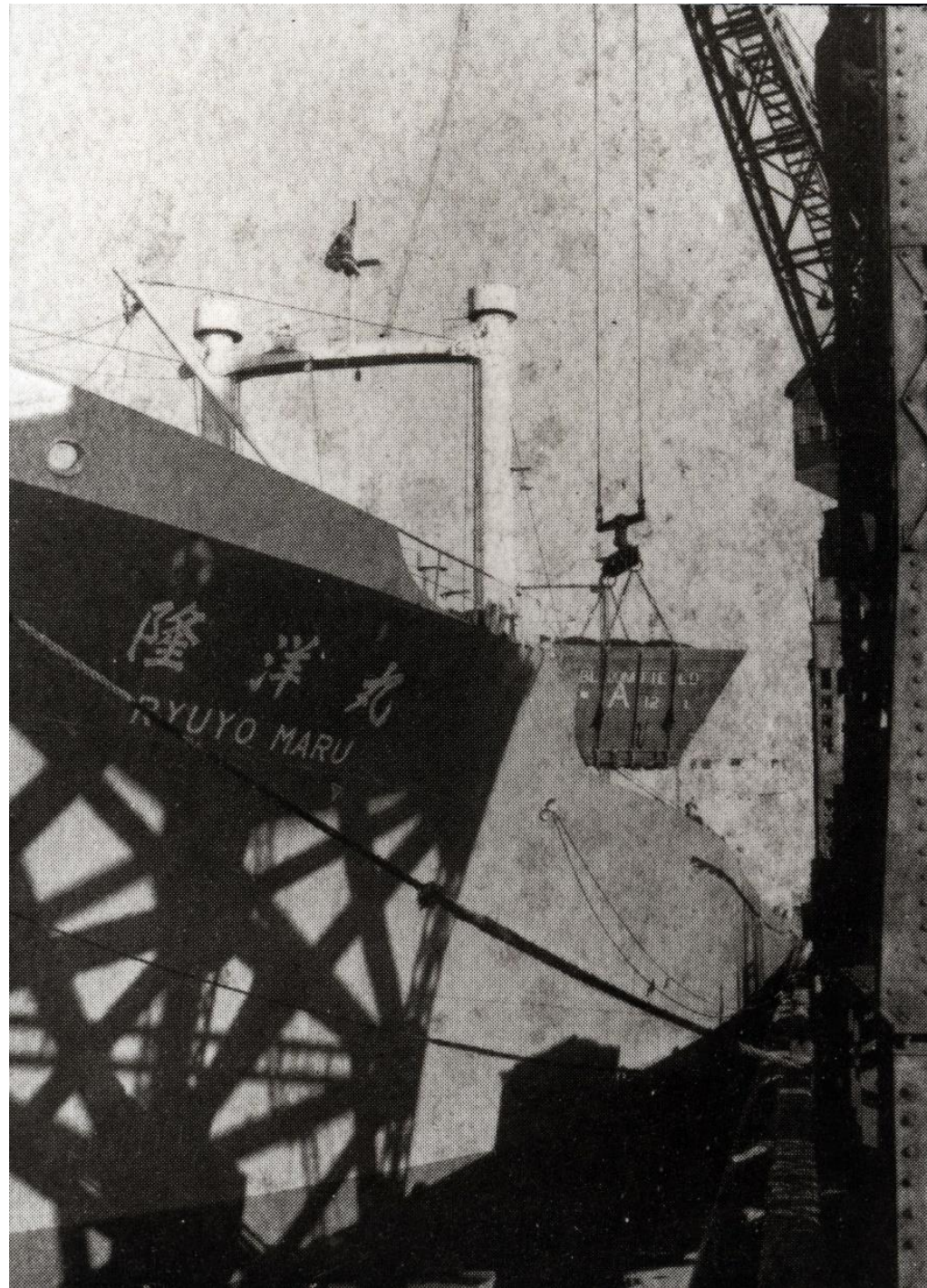
BLOOMFIELD COLLIERIES PTY. LIMITED

BOX 4,

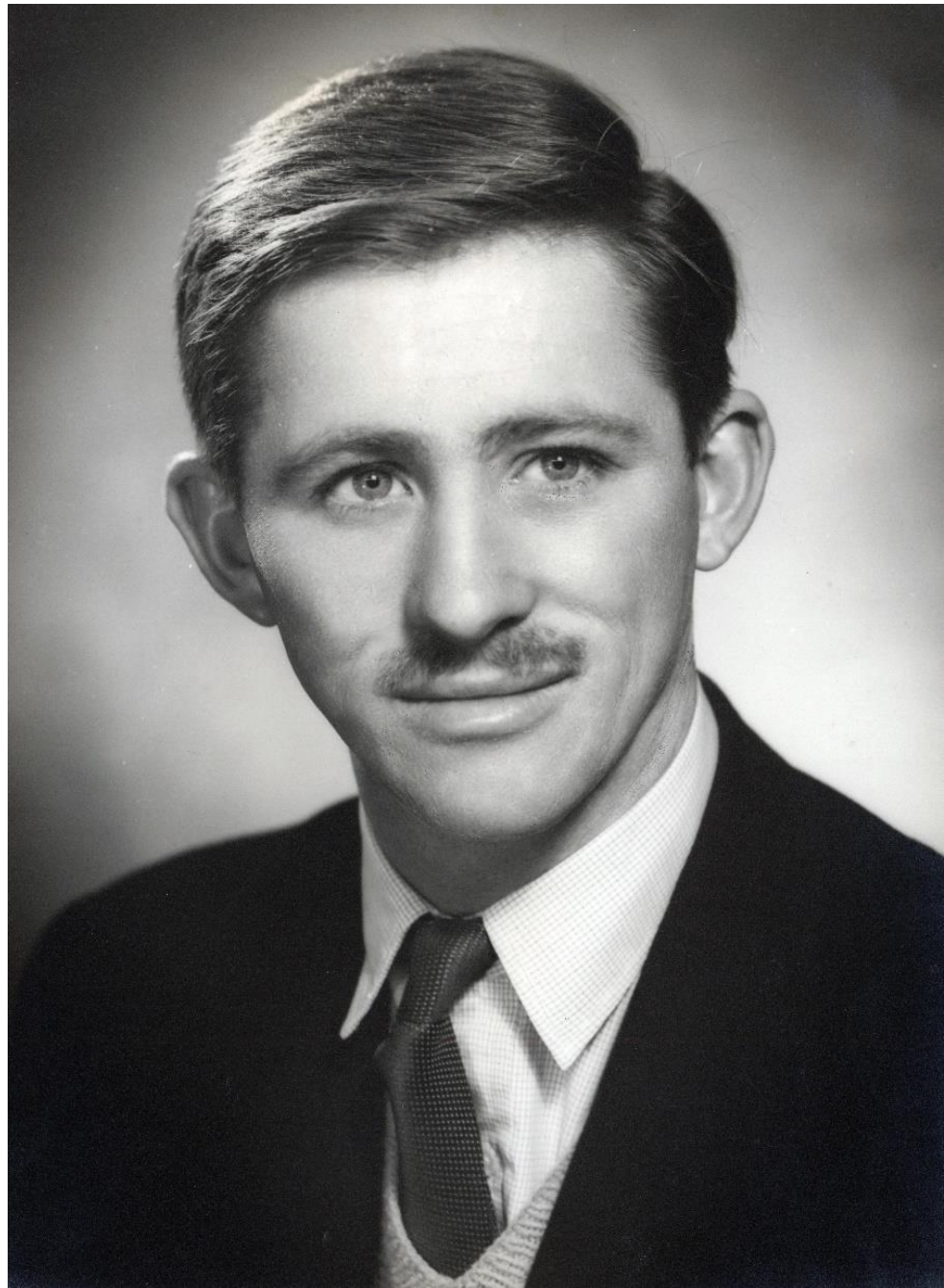
EAST MAITLAND, N.S.W.

TEL. MAIT. 576.























welcome to
RIX'S CREEK
MINE



*Proudly
Australian*

P.O. BOX 4
EAST MAITLAND
NSW. 2323
Ph: (065) 711067
Fax: (065) 711066













VALE

INTEGRA COAL OPERATIONS

OPEN CUT MINE













• RIX'S CREEK •
LIEBHERR











RIXS CREEK MINE - CONTINUATION OF MINING PROJECT

Environmental Impact Statement

Volume 1 - Main Report

Appendices A - G

Prepared for
The Bloomfield Group
Four Mile Creek Road
Ashtonfield | NSW | 2323
Australia









INSIDE BLOOMFIELD
LINDA GREEDY









**NO
MINES**

ON LIVERPOOL PLAINS - OUR FOOD BOWL



WORD OF THE YEAR

Post-truth

FACEBOOK
IS LYING BUT
NOBODY IS
CARING









**NIPPON STEEL &
SUMITOMO METAL**

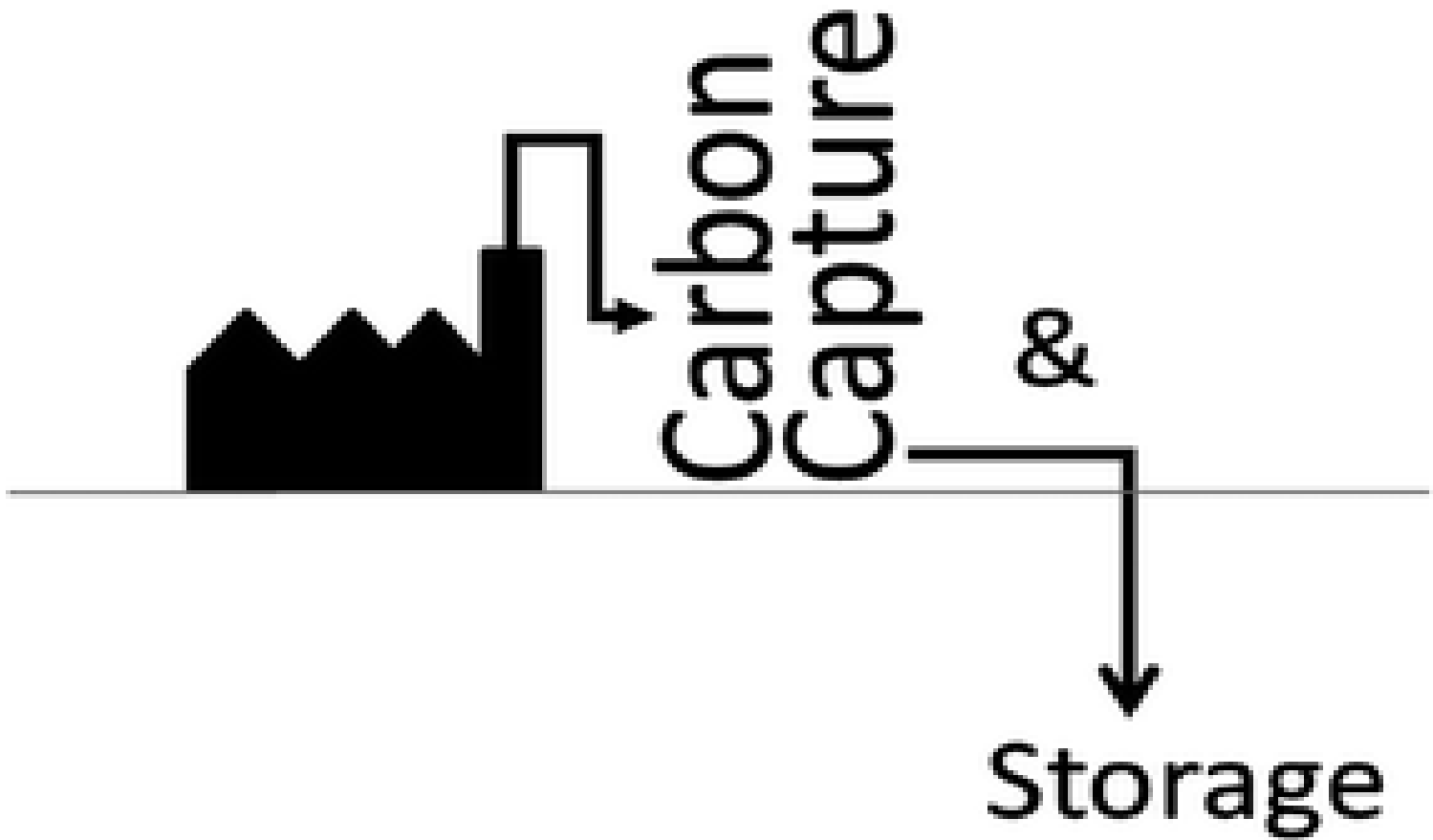




**ASEAN
POWER
WEEK**

10th Banli Building
Longhua District
Shenzhen China

IMPACT Exhibition &
Convention Centre
Bangkok Thailand





Thank You

