



Mrs Gina Rinehart

Chairman
Hancock Prospecting Group Pty Ltd
&
Roy Hill Holdings Pty Ltd

Sydney Mining Club Christmas Dinner

3 December 2015

Anangel Explorer Berthing at Roy Hill's South West Creek Wharf



Gina Rinehart, Tad Watroba, Ian Plimer & others at the Roy Hill Mine Stockyards



First Ore Being Loaded Onto MV Anangel Explorer



Roy Hill Exploration Camp



Mrs Gina Rinehart & Chief Geologist, Richard Paquay at Roy Hill - 1992



Mrs Gina Rinehart & Tad Watroba at the Roy Hill Exploration Camp



Exploration Drilling at Roy Hill





Roy Hill Equity Partners Signing Ceremony





Roy Hill Debt Finance Signing Ceremony



Roy Hill Debt Finance Signing Ceremony



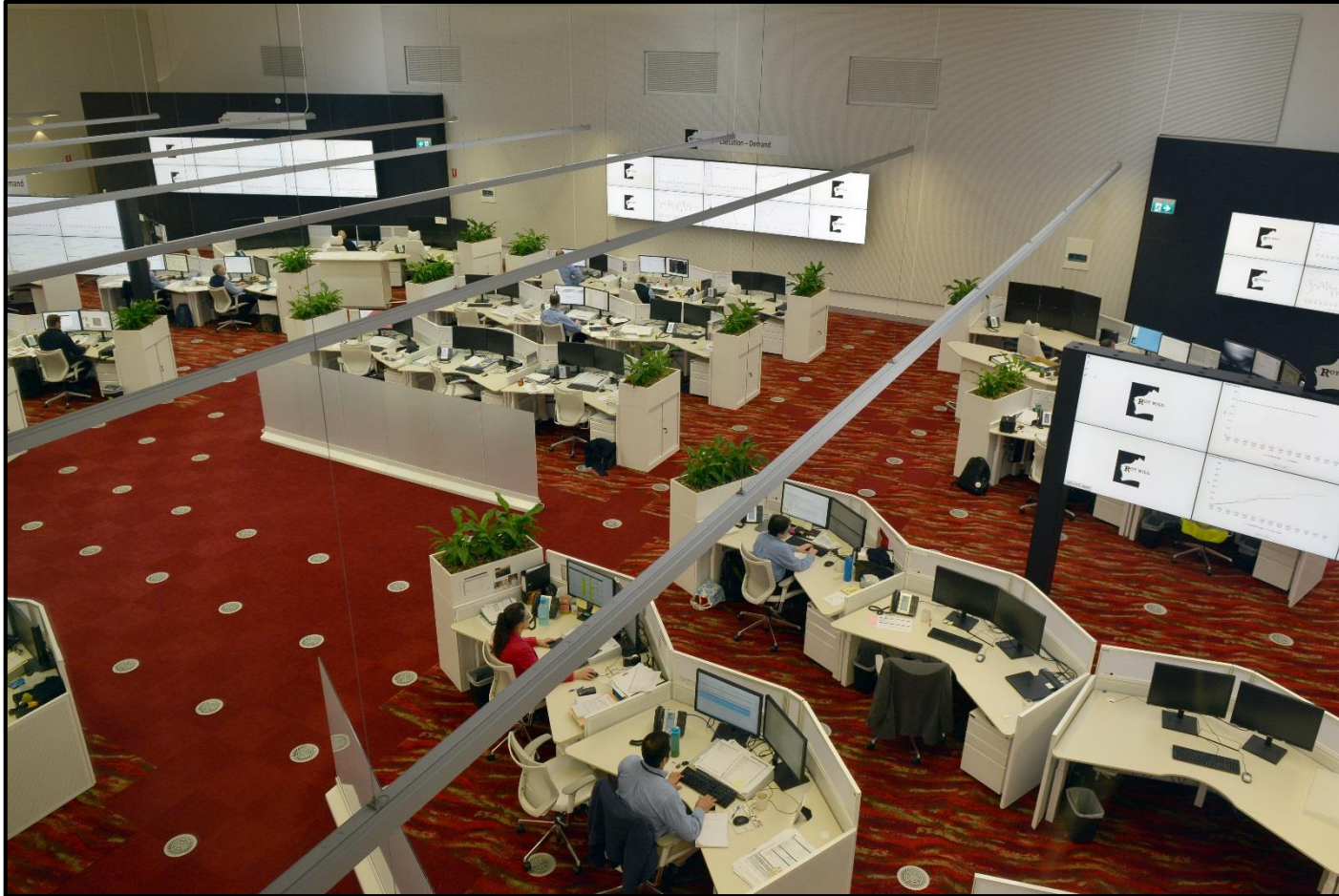
Roy Hill Bankers Lunch by the Fortescue River



Roy Hill's Corporate Headquarters & Remote Operations Centre



Roy Hill's Remote Operations Centre



The List is Long and the Cost Significant



- The largest debt financing agreement in the world for a largely greenfield mainland mineral resource project development.



- The largest commercial deal between Australia and South Korea in history. (EPC Contract)

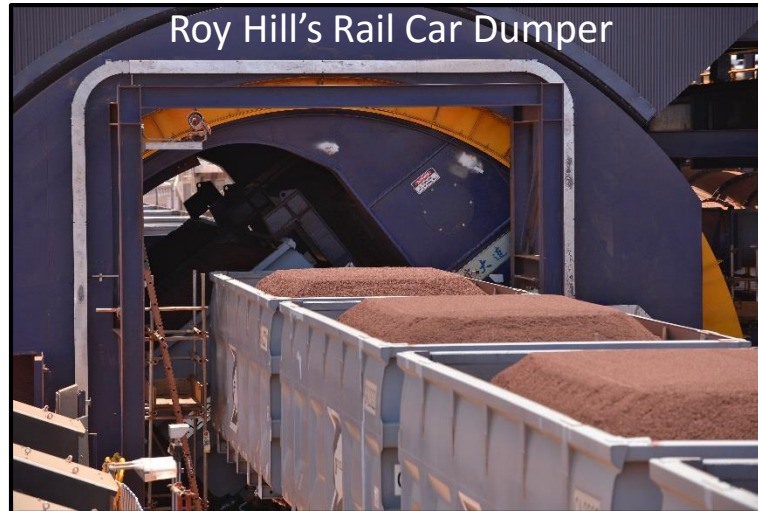


Some of the world's largest equipment, including...

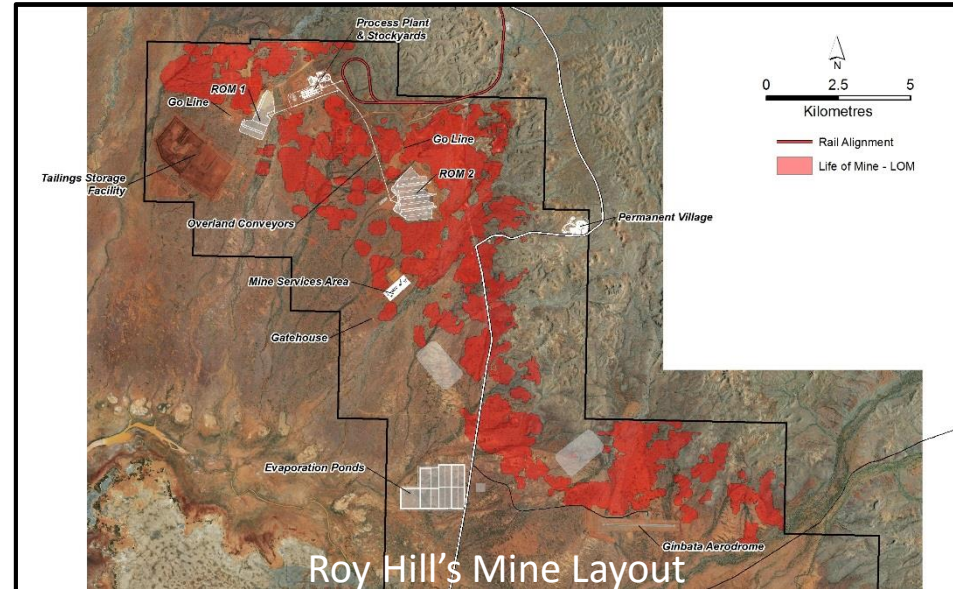
- The world's largest Bucket Wheel Reclaimers operating at both the Port and Mine.



- The fastest Rail Car Dumper unloading cycle time in the world.



- The largest single iron ore mine in Australia.



- Award winning Corporate Headquarters & Remote Operations Center, with some of most advanced technology in the world.



- The largest debt financing agreement in the world for a largely greenfield mainland mineral resource project development.
- The largest commercial deal between Australia and South Korea in history. (EPC Contract)
- The world's largest Bucket Wheel Reclaimers operating at both the Port and Mine.
- The fastest Rail Car Dumper unloading cycle time in the world.
- The largest single iron ore mine in Australia.



Mining at Roy Hill



Locomotive 1001 “Ginny” Travelling through the Pilbara



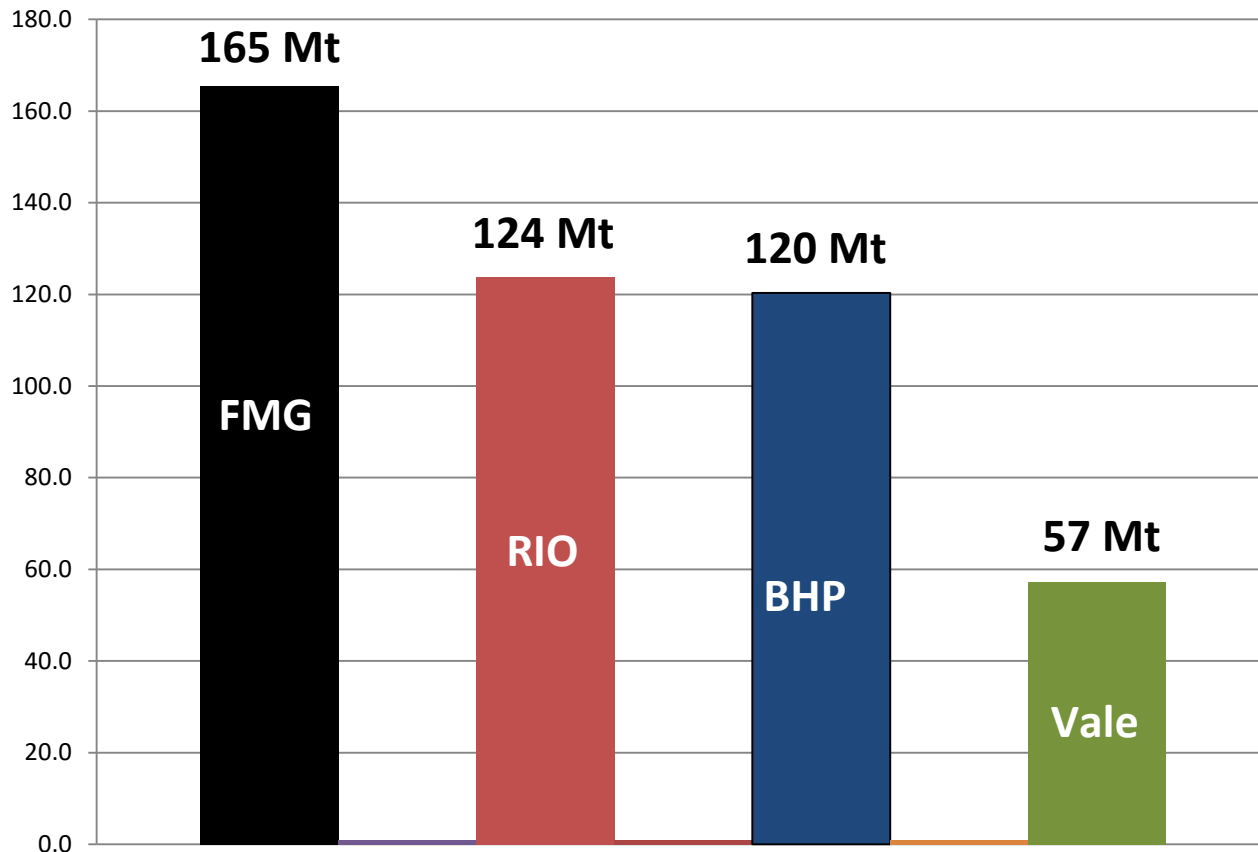
Roy Hill's South West Creek Wharf & Port Landside Infrastructure



Morale Is Good



Increase in Iron Ore Production Volumes since 2008 (Mt)





Roy Hill Mine Processing Plant



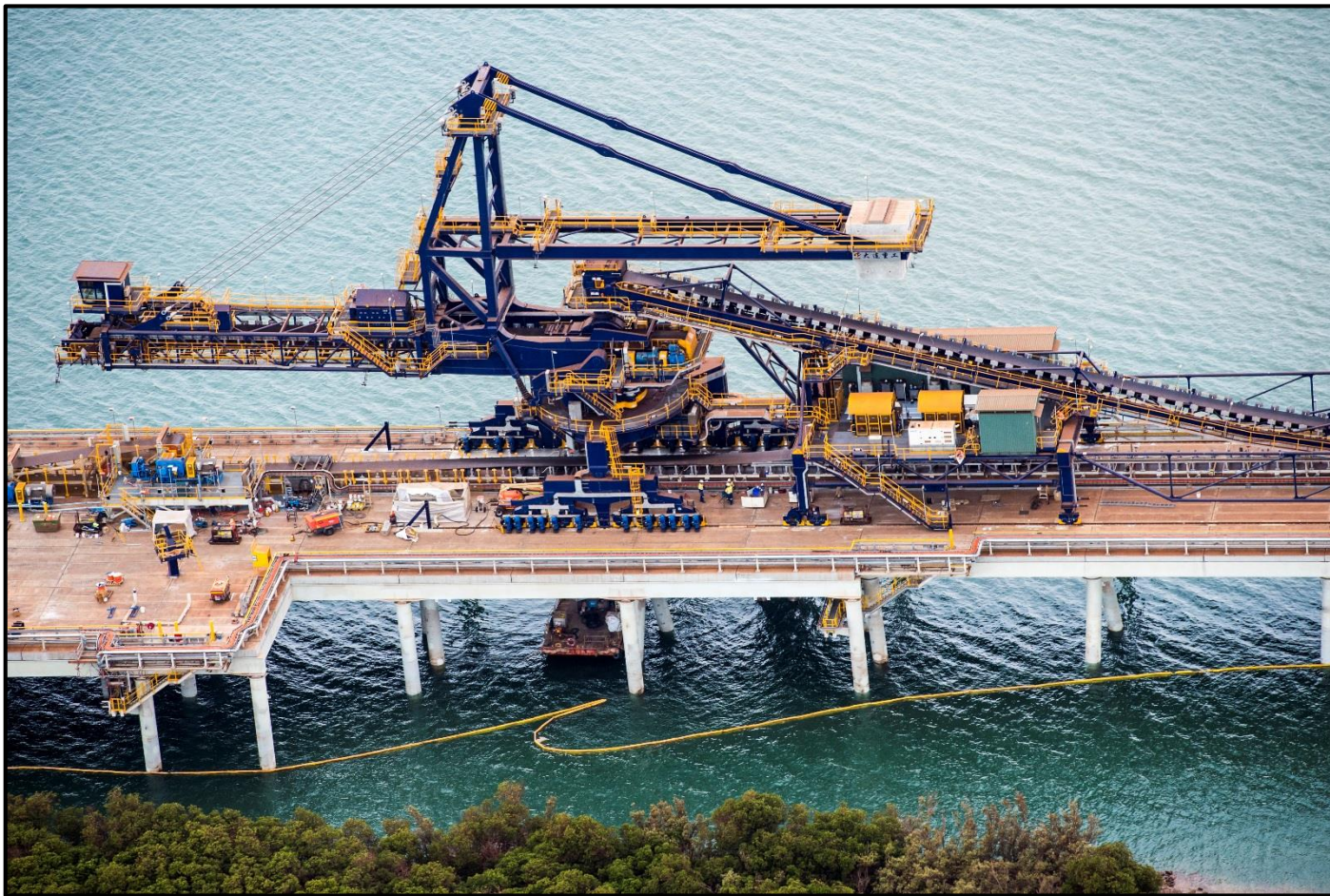
Stacking the First Ore at the Roy Hill Mine Stockyards



Stacking the First Ore at the Roy Hill Port Stockyards



Roy Hill's Shiploader at South West Creek Wharf in Port Hedland



Roy Hill's Mine Accommodation Village



“The Winning Team”



Sanjiv Manchanda, Garry Korte, Mrs Rinehart, Barry Fitzgerald & Tad Watroba





THANK YOU

